

# Tuition Protection Plan

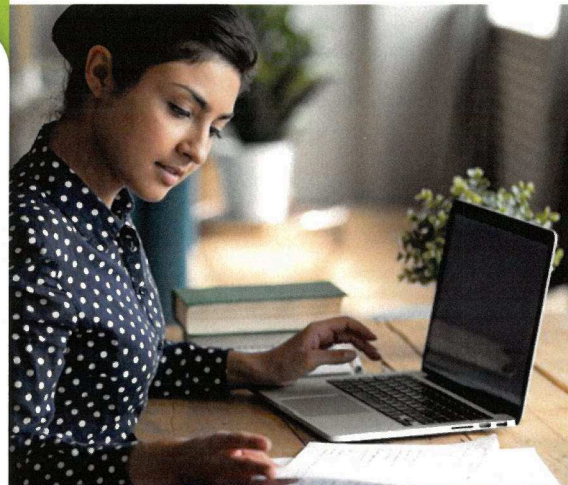
Tuition Insurance provides confidence by reimbursing tuition costs if a student withdraws at any time during the semester for a covered reason.\*

**Mental Health Conditions**  
like depression or anxiety

**Chronic Illness**  
like diabetes or an auto-immune disorder

**Serious Injury or Illness**  
like mononucleosis or a severe head injury

OPEN YOUR CAMERA AND SCAN THIS CODE



[GradGuard.com/Tuition](https://gradguard.com/Tuition)  
(877) 794-6603



\* Terms, conditions, and exclusions apply, incl. pre-existing conditions.