

ALL ABOARD

NEW STUDENT ORIENTATION 2009



VÄLKOMMEN, TUAJ LOS, BIENVENIDOS...

No matter how you say it, welcome! We are pleased to receive you as the newest members of our campus community. As you have likely realized already, Gustavus is a stimulating and supportive environment where people both challenge and care for one another. Our “welcome” to you, therefore, is much more than an extension of hospitality. It is an invitation to active participation in the conversations, events and relationships that bind us together.

I urge you to make a personal investment in Gustavus. Get to know faculty members and staff; reach out to fellow students; share with us your talents, insights, experiences, and dreams; and in so doing, contribute to the vitality of our campus and local community. In a word, accept the many challenges to growth now before you, confident of our support and sure of our assistance.

We're delighted you've joined us!

Sincerely,



Jeffrey Stocco
Dean of Students

If you have any questions regarding Orientation 2009, please contact the Student Activities Office at (507) 933-7598 or mruble@gustavus.edu.

GUSTAVUS 
GUSTAVUS ADOLPHUS COLLEGE

Office of Dean of Students
800 West College Avenue | St. Peter, MN 56082-1498
Telephone: (507) 933-7526 | Fax: (507) 933-6526 | gustavus.edu

WELCOME TO GUSTAVUS!

The Orientation program is focused on helping you with the transition to Gustavus and establishing a sense of belonging in this new college community. We know that feeling connected as a Gustie takes a different amount of time for each person. However, we hope that with the assistance of many members of our community, you will begin to see this as your home.

Consider this booklet your syllabus for the next few days. It contains a complete Orientation schedule with descriptions of activities, as well as pieces of crucial information and a few random bits of fun facts. You are strongly encouraged to take part in all Orientation activities. You are a college student now, and you'll quickly find that what you get out of college is in direct correlation with what you put into the experience. The Orientation schedule is carefully laid out to maximize your first few days here socially, emotionally, and academically. We know it's a busy, stressful time and you may feel tired and overwhelmed. There will be plenty of time (more than you can imagine!) for you to arrange your room and just "hang out" once classes begin. On behalf of the Gustie Greeters and Student Activities Office, we sincerely hope your Orientation experience is positive and affirming of your choice to become a Gustie!

On Friday, September 4 (move-in day), the following offices will be open for your convenience:

| | | |
|-----------------------------------|---|--|
| Technology Services | Helpline (x6111) Residence Halls Olin Hall walk up Book Mark | 8 a.m.–4:45 p.m. 10 a.m.–3 p.m. 10 a.m.–3 p.m. 9 a.m.–4:45 p.m. |
| Health Service | Jackson Campus Center | 8 a.m.–4:30 p.m. |
| Student Employment | Carlson Admin. Building | 8 a.m.–4:45 p.m. |
| Post Office | Jackson Campus Center | 8 a.m.–4:30 p.m. |
| ID card | Jackson Campus Center | 8 a.m.–3:30 p.m. |
| Advising Center | Johnson Student Union | 8 a.m.–4:45 p.m. |
| Telecommunications | Olin Hall Basement | 8 a.m.–4:45 p.m. |
| Parking Permits (Table) | Jackson Campus Center | 9 a.m.–4:45 p.m. |
| Book Mark* | Jackson Campus Center | 9 a.m.–4:30 p.m. |
| Student Accounts/ Bill Payment | Carlson Admin. Building | 9 a.m.–4 p.m. |

* If you have pre-ordered your textbooks online, they may be picked up in the Board Room, Jackson Campus Center upper level, during store hours.



Check out this section throughout the booklet to find out some fun activities and Gustavus facts.

ATMs are located across from Health Services on the lower level of the Campus Center. (That's down the hallway from the Book Mark.)

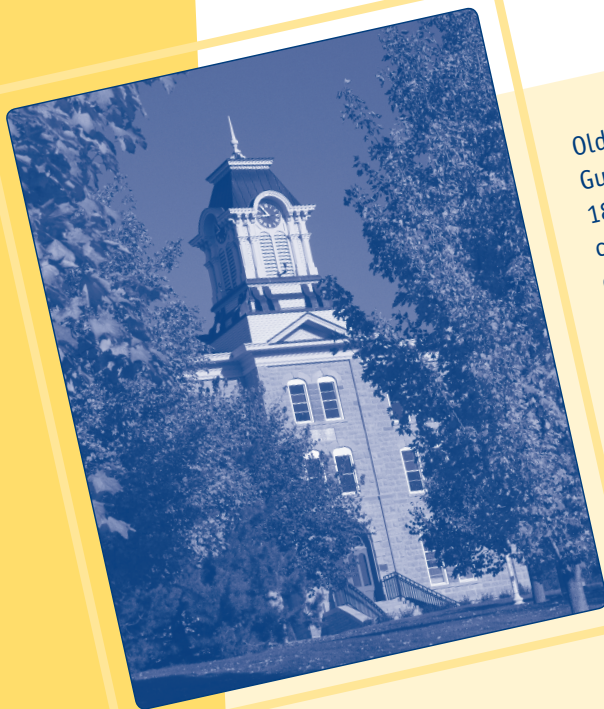
FRIDAY, SEPTEMBER 4

9 a.m.–Noon **Move into your Residence Hall.** Please register at the front desk of your residence hall to receive your keys.

9 a.m.–3 p.m. **All student check-in:** for student ID, voice mail information, advisor meeting locations, student employment assignment, orientation group, and schedule. *Information Desk, Jackson Campus Center*

11:30 a.m.–1:30 p.m. **Lunch.** You and your family are guests of the College. We encourage all new students living on- and off-campus to join us with their families for this lunch. Please pick-up your tickets at the Information Desk or at the event entrance. *Lund Center*

3 p.m. **Convocation for New Students and Families**
A ceremonial welcome and presentation of the entering class. Dress is casual. *Christ Chapel*



Old Main was the only building on the Gustavus campus upon its completion in 1876. It has served the school in many capacities since that time—kitchen and dining rooms, classrooms, and office space. Totally remodeled in 2005, it is now the home of the classics, philosophy, political science, and religion departments. Some “surprises” which popped up during the renovation process were rediscovering the box where the rope that rang the clock tower bell once hung, the arched doorways in the hallways on the second and third floors, and two large cisterns underground in the basement.

- 4:30 p.m. **Families depart from campus**
Thank you for the support, encouragement, and hard work that made this day possible!
- 5 p.m. **Pittman & Sohre Halls: Dinner with Floor/Section,**
Evelyn Young Dining Room
Norelius Hall: “For Your Own Sake” presentation,
Norelius Hall (Your CF will escort you.)
- 6:15 p.m. **Pittman & Sohre Halls: “For Your Own Sake”**
presentation, Norelius Hall (Your CF will escort you.)
Norelius Hall: Dinner with Floor/Section,
Evelyn Young Dining Room
- 7:30 p.m. **Residence Hall Activities**
Locations will be announced in each hall.
- 9:30 p.m. **Candle Service**
A time for quiet reflection after a busy day. Led by the Chaplain’s Office and Gustie Greeter orientation staff.
Christ Chapel
- 10:30 p.m. **Hypnotist Brian Imbus**
Alumni Hall, Johnson Student Union

2009-2010 STUDENT PROFILE

Enrollment

| | |
|--|-------|
| Undergraduate | 2,574 |
| Full-time | 98.1% |
| Residential | 81% |
| Female Students | 57% |
| Male Students | 43% |
| In-state residents | 80% |
| Out-of-state residents | 19% |
| International students | 1% |
| States represented | 40 |
| Countries represented | 15 |
| Students of color | 10% |
| Average class size | 15 |
| Students receiving Financial assistance | 90% |

FIRST-YEAR CLASS

| | |
|------------------------|-----|
| Size | 626 |
| Students of color | 14% |
| Out-of-state residents | 20% |

GRADUATION DATA

| | |
|---------------------------|-----|
| Traditional students who: | |
| return after first year | 91% |
| graduate in 4 years | 81% |

POST-GRADUATION DATA

| | |
|--|--------|
| Graduates who: | |
| Go directly to graduate or professional school | 28% |
| Ultimately attend graduate or Professional school | 75% |
| Alumni network | 25,500 |

SATURDAY, SEPTEMBER 5



This symbol originated on a Scandinavian coat of arms in the 14th century. Although the original meaning is not known, some historians believe the insignia symbolizes the three Magi, while others feel it depicts the three geographic regions of Sweden. Still others say the crowns represent the Trinity of the Father, the Son, and the Holy Spirit.

7 a.m.–1 p.m. **Evelyn Young Dining Room open**

10 a.m. **Orientation Group Meeting** (Bring this booklet)
Each student is assigned to a small group which will meet regularly throughout Orientation. You will have received your group number and meeting location at the Campus Center check-in on Friday. If you don't have this information, come to the Campus Center Information Desk.

11 a.m.–3 p.m. **Dining Service Scheduling Session**
Students receiving a work assignment with Dining Service may set up a work schedule during this time. Please allow 30 minutes and bring a copy of your class schedule. *Campus Center Banquet Room*

11 a.m.–5 p.m. **Music Auditions**
You are encouraged to get involved with music at Gustavus. Auditions are held during this time and should be a priority if you want to get involved (if audition slots fill up, additional times are added Monday). Come to the Music Building Lobby if you need to schedule an audition time or check on your current appointment.

11:30 a.m.–1 p.m. **Lunch and Tours with your Orientation Group**
Evelyn Young Dining Room

1 p.m. **Get the "Scoop!"**
Groups 1–25: Inside Scoop Let the Peer Assistants give you the real "scoop" on Gustavus life. These light-hearted skits are a must-see for all new Gusties. *Anderson Theatre, Schafer Fine Arts Center*

Groups 26–50: Meet the President President Ohle and his wife, Kris, invite you to their home for an old-fashioned ice cream social with freshly scooped sundaes and root beer floats. *President's House*

- 2 p.m. **Get the “Scoop!”**
Groups 26–50: Inside Scoop Let the Peer Assistants give you the real “scoop” on Gustavus life. These light-hearted skits are a must-see for all new Gusties.
Anderson Theatre, Schafer Fine Arts Center
- Groups 1–25: Meet the President** President Ohle and his wife, Kris, invite you to their home for an old-fashioned ice cream social with freshly scooped sundaes and root beer floats. *President’s House*
- 3 p.m. **Out of State Student Reception**
 If you have travelled some distance to attend Gustavus, you are not alone! Meet and mingle with fellow new students who hail from outside the five state area (MN, WI, IA, SD, ND). *The Dive, Johnson Student Union*
- 3–4 p.m. **Theatre Orientation and Audition Workshop**
 Find out more about the many opportunities to participate in productions at Gustavus.
Anderson Theatre, Schafer Fine Arts Center
- 5 p.m. **President’s Banquet**
 A dress-up occasion (semi-formal) to honor new students. Collegiate Fellows will escort residents.
Evelyn Young Dining Room
- 8 p.m. **Square Dance**
 You don’t want to miss this incredible Gustavus TRADITION! *Lund Arena Parking Lot*
 (Rain location: *Lund Center*)
- 9:30 p.m. **Campus Movie: Star Trek**
Wallenberg Auditorium, Nobel Hall
- 9:30 p.m. **Coffeehouse Night**
 Featuring popular Gustie performers.
Courtyard Café, Lower Level, Campus Center
- 10:30 p.m. **Superhero Night**
 It’s a bird! It’s a plane! No, it’s a GUSTIE! We all watched superheros in cartoons and movies growing up. Now it’s time to dress like your favorite hero!
The Dive, Johnson Student Union

EVERYTHING YOUR ID CARD CAN DO AND MORE . . .

- Your card breezes you through the Market Place registers.
- The Courtyard Café only takes your card, not number, so be sure to keep it on hand for big cookies and vanilla lattés.
- Cakes and other Market Place items can be purchased in the Dining Service office using your card.
- Book Mark charges can be set up with the use of your card.
- To play pool in the Dive or if you are looking for a rousing game of foosball, go to the Information Desk and give your card in exchange for some fun.
- Rent out sports and camping equipment in Lund Center at the Red Desk.
- If you lose your card, go to the “Three Crowns Card” office located past the Market Place entrance towards the Dining Service office. The cost for a replacement is \$5.

SUNDAY, SEPTEMBER 6

7 a.m.–7 p.m. **Evelyn Young Dining Room open**

9:30 a.m. **Orientation Group Meeting**
Meet in regular location.

10:30 a.m. **Opening the Doors to Christ Chapel**
There's more to it than the big, beautiful building in the center of campus. Come for a time of song, prayer, learning, and community building. Learn about the variety of worship, study, prayer, and spirituality opportunities available through the Office of the Chaplains. *Christ Chapel*

11:30 a.m. **Lunch** with your Collegiate Fellow and residence hall floor/section. *Evelyn Young Dining Room*

12:30 p.m. **CIRP Survey** *Lund Arena*

1:30 p.m. **"Enrique's Journey" Book Discussion**
Orientation group meeting location



Johnson Student Union was originally the first gymnasium at the college, completed during the 1921–1922 school year. The current first floor was a regulation-sized basketball court. Above the court was a balcony for spectators and above that was a third level with a running track. A handball-squash court and swimming pool were in the lower level, currently The Dive, and portions of the original walls are still in place. Come and check out this little piece of Gustavus history.

A SAMPLING OF THE 110 STUDENT CLUBS AND ACTIVITIES

- 3 p.m. **SCVNGR Hunt with a Twist** Get ready to experience the Gustavus campus in a whole new way! Join the rest of your Greeter Group to participate in this “take-it-to-the-next-level” scavenger hunt that is all based in... you’ve got it...TEXT MESSAGING!
- 3–4:30 p.m. **Orientation and Auditions for Gustavus Dance Company and Apprentice Dance Company**
Find out more about dance opportunities at Gustavus. Students do not need to prepare anything in advance for the audition, but should arrive at the studio dressed to take a dance class. *Kresge Studio, Schafer Fine Arts Center*
- 5–6:40p.m. **Dinner with your Orientation group.** Meet promptly forty-five minutes before your E Pluribus Gustavus performance time. *Evelyn Young Dining Room*
- 5:45–9 p.m. **“E Pluribus Gustavus” A Celebration of the Human Spirit: Creating Community**
An annual campus-wide diversity initiative for new students to discuss transition and difference in lifestyles, social issues, and environmental changes. Through the performance and discussion you will have an opportunity to see how culture shapes our identities and to demonstrate the multicultural aspects of our common, yet varied human spirit. We want to welcome you into this community and we celebrate you. *Anderson Theatre*
- | | Dinner Time | Performance Time |
|---------------------------|-------------|------------------|
| Orientation Groups | | |
| Orientation Groups 1–18 | 5 p.m. | 5:45 p.m. |
| Orientation Groups 19–36 | 5:50 p.m. | 6:35 p.m. |
| Orientation Groups 37–50 | 6:40 p.m. | 7:25 p.m. |
- 9:30 p.m. **Campus Movie: Star Trek**
Wallenberg Auditorium, Nobel Hall
- 9:30 p.m. **Bingo Night** Fun and prizes! *Heritage and St. Peter Banquet Rooms, Jackson Campus Center*
- 10:30 p.m. **Dress That Tune** Whether “It’s Raining Men,” “No Surprise,” or “Single Ladies,”. . . “Whatever it is”. . . wear a costume that’s inspired by a favorite song. *The Dive, Johnson Student Union*

- Adolphus Jazz Ensemble
- Alpha Phi Omega
- Asian Cultures Club
- Big Partner/Little Partner Mentoring Program
- Building Bridges Diversity Conference
- Campus Activities Board
- College Democrats
- College Republicans
- Dance Team
- Forensics
- Fraternities and Sororities
- Gustavus band, choir, orchestra
- Gustavian Weekly (student newspaper)
- Gustavus Greens (environmental awareness)
- Gustavus Youth Outreach
- Habitat for Humanity
- Intercollegiate athletic teams
- Intramural sports
- International Cultures Club
- KGSM radio
- Pan-Afrikan Student Organization
- ROTC
- Student Senate
- Swing Club
- Womyn’s Awareness Center

MONDAY, SEPTEMBER 7

GUSTAVUS LINGO

Chances are you are already familiar with some of these Gustavus terms and before you know it you'll be talking like a seasoned Gustie!

- the Caf • the Arb • the Dive • the Den • C in CC • POs • co-ed • Alumni • 7 mile • the rock • SAO • complex • Admin • Res Life • 3 flags • SSC • Ring Road • P-ball • Erbs & Gerbs • the Mall • the grib • the lib • CAB • Con/Vic • the Blue •

7 a.m.–2 p.m. **Evelyn Young Dining Room open**

8:45 a.m. **Fun Run/Walk** Prizes awarded and cool treats for all participants. Meet at *Interpretive Center*

10 a.m. **Orientation Group Meeting**
Meet in regular location

11:15–11:45 a.m. **Academic Success Sessions**
Classes begin tomorrow! Are you prepared? Choose one of these sessions to get you on the right track. Feel free to grab food from the Market Place and bring your tray!

Impressing your Profs, *Heritage Banquet Room*
No one knows you here. You have to establish your academic reputation all over again. What does it take to do your best? Different from high school? Listen to professors tell stories about what they've seen in their classrooms, what works, and what doesn't work.

"How I Get Good Grades," *3 Crowns Banquet Room*
An upperclass student panel of high achievers in the classroom will share tips and answer questions on how they maintain their commendable GPAs, balance schoolwork and a personal life, and about their transition to college level academics.

Organizing Your Time and Your Backpack, *St. Peter Banquet Room*
Going to college is a common choice, but the daily commitment to academic excellence and the reality of classes/homework can be challenging. Advising Center staff will teach you some practical time management tips and stress-reducing organizational skills, building on what you have found works in the past and what upper class students recommend. We'll start with your backpack and daily planners . . . sharpen your pencils.

Learning Strategies for Students with Disabilities,
Academic Advising Center, Johnson Student Union
Meet Laurie Bickett, Disability Services Coordinator. Students with learning disabilities, Attention Deficit Disorder, and physical impairments survive and thrive at Gustavus. Stop by to find out about services for special needs and strategies that will help enhance your education at Gustavus. Take charge of your education and accommodations.

12:15–12:45 p.m. **Academic Success Sessions repeated**
The same sessions are offered in the same locations (see above) so you can attend two. Feel free to grab food from the Market Place and bring your tray!

1–1:30 p.m. **MANDATORY Student Employment Orientation**
All students with student employment **MUST** attend.
Alumni Hall

1:30–2:30 p.m. **Student Employment Training** with assigned office (excluding Dining Service).

2:30–5 p.m. **First Term Seminar Meetings & Advising**
Curriculum I students received advisor and location in Check-in Packet.

2:30–4:30 p.m. **Curriculum II Advising**
Faculty advising and CII book discussion.
Banquet Room, Jackson Campus Center

5–7 p.m. **Back to School Bash**
Picnic style dinner with live music and entertainment for all new and returning students. *Lund Center*

9:30 p.m. **Campus Movie: Star Trek**
Wallenberg Auditorium, Nobel Hall

YOU MADE IT! Orientation likely felt like a whirlwind and we hope you feel like you're "on board" for a great first year! Spend this evening relaxing and preparing yourself for classes tomorrow. Although Orientation is over, your relationship with your Gustie Greeter is not. Continue to utilize him or her as a resource and friend throughout this first year. Your Greeter will stay in touch with you and will plan more activities for your Orientation group to enjoy. Watch the "Your First 100 Days" calendar for many additional opportunities to connect with others and acclimate to the Gustavus community!

GUSTIE ACTIVITIES AND TRADITIONS

With an average of 50 events organized by the College during any given week and 100+ active student organizations, students have many avenues to express their ideas, stretch their minds, and find a niche at Gustavus.

Weekly conversations and activities on campus can include:

- academic and career panels and lectures
- student, faculty, and visiting artist music recitals
- chapel services
- popular music bands
- multicultural and foreign language film series
- intramural and intercollegiate athletic events
- open microphone nights for student poetry, music, and comedy
- Lutheran worship, Catholic mass, and Taizé meditation services
- Fulbright visiting scholar lecture series
- Job interviews
- Sidewalk chalk statements
- Ice cream socials on the mall
- Comedians
- Painting "the Rock"
- Controversy discussion series
- Night club dances in the Dive
- Volunteer activities

OPENING WEEK OF CLASSES

PASSPORT PROGRAM

Get your train ticket validated at a minimum of two of the events below for your chance to win over \$1000 in prizes! The more events you attend the more you could win! Train tickets will be distributed by your Gustie Greeter during Orientation. Be sure to bring them to each event and get them stamped to increase your chances of winning a prize.

Passport events include:

- Ultimate Road Trip (9/9)
- "Natural Highs" (9/11)
- Involvement Fair (9/15)
- "Can I Kiss You?" (9/23)
- "Vote for Pedro" (9/24)
- Sonia Nazario (9/28)
- Saturday Night in Lund (10/3 or 10/17)

TUESDAY, SEPTEMBER 8

- 7 a.m.–11 p.m. Evelyn Young Dining Room open
- 8 a.m. Classes Begin
- 10 a.m. Opening Convocation
President Jack Ohle, Homilist
Christ Chapel
- 6 p.m. Meeting for all students taking music lessons. All students registered for MUS 245–267, MUS 345–367, or MUS 128–129 must attend this meeting to receive specific information and lesson times. Bring a copy of your class schedule. *Björling Recital Hall*
- 8 or 9 p.m. Residence Hall Floor and Section Meetings
Watch for signs in your residence hall for locations

WEDNESDAY, SEPTEMBER 9

- 7 p.m. Ultimate Road Trip, *Alumni Hall*
- 7–9 p.m. Dance Team Auditions, *Lund Center aerobics room*
- 9–11 p.m. Swing Club, (lessons from 8:30–9 p.m.) *Alumni Hall*

THURSDAY, SEPTEMBER 10

- 7–9 p.m. Cheer Team tryouts, *meet by the Red Desk in Lund*
- 7–9 p.m. Dance Team Auditions, *Lund Center aerobics room*

FRIDAY, SEPTEMBER 11

- 4 p.m. Dance Team Auditions, *Lund Center aerobics room*
- 5–7 p.m. Community Service Center Fair, *Campus Center Upstairs Hallway*
- 5 p.m. Volleyball hosts Gustavus Classic Tournament
(through September 12)
- 7:30 p.m. "Natural Highs" with Matt Bellace, *Alumni Hall*
- 9 p.m. Outdoor movie: Angels & Demons, *old football field*
- 11 p.m.–1 a.m. Dance, *The Dive*

SATURDAY, SEPTEMBER 12

- 12–9 p.m. Rock Bend Folk Festival, *MN Square Park* (walking distance)
- 1 p.m. Football vs. Coe College, *Hollingsworth Field*
- 7 & 10 p.m. Angels & Demons, *Wallenberg Auditorium*
- 9 p.m. Dueling Pianos, *Alumni Hall*
- 10 p.m. Saturday Night in Lund

SUNDAY, SEPTEMBER 13

- 12–6 p.m. Rock Bend Folk Festival, *MN Square Park* (walking distance)
Deadline for Fall Intramural signups

MONDAY, SEPTEMBER 14

- 9 a.m.–6 p.m. Poster Sale by the Book Mark
Fall Intramural sports begin

TUESDAY, SEPTEMBER 15

- 9 a.m.–6 p.m. Poster Sale by the Bookmark
- 4 p.m.–6 p.m. Student Involvement Fair, *Eckman Mall*
Student Organizations will showcase what they have to offer

Consult your First 100 Days Calendar for more information and a schedule of events throughout the fall semester!

INFORMATION FOR YOU

THE BOOK MARK

Campus Center, Lower Level

| | |
|---|---------------------|
| Hours during Orientation: Friday, September 4 | 9 a.m.–4:30 p.m. |
| Saturday, September 5 | 10 a.m.–4 p.m. |
| Monday, September 7 | 8:30 a.m.–6 p.m. |
| Tuesday, September 8 | 8:30 a.m.–5:30 p.m. |

Purchase only the texts that you are ABSOLUTELY SURE you need and want. Text refunds will be issued during the first 5 days of Fall and Spring semesters. The first 5 days of class you will need only your sales receipt to return texts, the second week you must show your sales receipt and a current class schedule to qualify for a refund. We give a full refund for books with no marks in them and a 75% refund for books with any marks, including your name. If you think you may have purchased the wrong books, bring your sales receipt and class schedule to the office along with the text(s), and keep packages wrapped until you are sure you'll remain in the class!

The Book Mark accepts cash, checks, Visa, MasterCard and Discover. You may also set up a student charge account, which can be accessed by using your ID card.

HEALTH SERVICES

Campus Center, Lower Level, 933-7630

Regular Hours: Monday–Friday 8 a.m.–4:30 p.m.
Extended Hours: Monday and Thursday 8 a.m.–6:30 p.m.
Call for appointments.

URGENT AND EMERGENCY SERVICES

The River's Edge Hospital offers Urgent Care and Emergency Services.
Urgent Care Hours: Monday–Friday 6:30 a.m.–10 p.m.
Saturday, Sunday, and Holidays 9 a.m.–6 p.m.

The St. Peter Clinic (Mayo Health Systems) and the Daniels Health Center (Mankato Clinic) and River's Edge Clinic are also available to see students. Appointments can be made at the St. Peter Clinic by calling 507-931-2110 or Daniels Clinic at 507-934-2325 or River's Edge Clinic at 507-931-2200.

Students should be prepared to show their insurance card at any location.

GENERAL STORES

Walmart
1881 E Madison Ave
Mankato, MN

Walgreens
1270 E Madison Ave
Mankato, MN

-or-
1705 Commerce Dr
North Mankato, MN

Target
1850 Adams St
Mankato, MN

Family Dollar
220 Grace St
St. Peter, MN

GROCERY STORES

Econofoods
612 S Minnesota Ave
St Peter, MN

Aldi
1621 E Madison Ave
Mankato, MN

Hy-Vee
2010 Adams St
Mankato, MN

Cub Foods
1200 S. Riverfront Dr
Mankato, MN

-or-
1800 E Madison Ave
Mankato, MN

Sam's Club
1831 Madison Ave.
Mankato, MN

OTHER STORES

River Hills Mall
1850 Adams St
Mankato, MN

STUDENT EMPLOYMENT

- Look...** for a Student Employment Assignment card in your Orientation check-in packet! If the assignment card says you need to do an "I-9 or W-4", see Student Employment staff in the Administration Building, Friday 8 a.m.–4:45 p.m.
- Plan...** to attend Student Employee Orientation in Alumni Hall on Monday, September 7, at 1 p.m.
- Meet...** your employment supervisor following this meeting for further information and employment orientation. (*Dining Service employees meet Saturday 11 a.m.–3 p.m. [see page 5].*)

PARKING PERMITS

Safety and Security, Basement of "A" Wing, Norelius Hall; ext. 8888

All students (resident and commuter) who wish to park on campus are required to register their vehicles and display a current parking permit. Never park in a visitor's lot, you are a student now!

Due to space constraints, the number of parking permits issued are limited. Submission of a parking application does not guarantee issuance of a parking permit. Permits are \$200 each.

PAYING FEES

Finance Office, Carlson Administration Building

Regular business hours: Monday–Friday 8 a.m.–4:45 p.m.,
with checks cashed from 9 a.m.–4 p.m.

THREE CROWNS ID CARD OFFICE

Campus Center Upper Level, Room 223

Hours during Orientation: Friday, September 4 8 a.m.–3:30 p.m.

Regular business hours: Monday–Friday 9–11:30 a.m.

TECHNOLOGY SERVICES (COMPUTER) ASSISTANCE

Gustavus Technology Services is here throughout Orientation and beyond to help you get your computer set up and networked in the Gustavus system. Staff will be available in Residence Halls, by telephone helpline at x6111, in the Book Mark, and in Olin Hall as follows:

| | | |
|------------------------------|-------------------|-------------------|
| Friday, September 4 | Helpline | 8 a.m.–4:45 p.m. |
| | Residence Halls | 10 a.m.–3 p.m. |
| | Book Mark | 9 a.m.–4:45 p.m. |
| | Olin Hall walk up | 10 a.m.–3 p.m. |
| Saturday, September 5 | Helpline | 8 a.m.–4:45 p.m. |
| | Book Mark | 10 a.m.–5 p.m. |
| | Olin Hall walk up | 10 a.m.–4 p.m. |
| Sunday, September 6 | Helpline | 8 a.m.–8 p.m. |
| | Residence Halls | 2 p.m.–5 p.m. |
| | Olin Hall walk up | 11 a.m.–4 p.m. |
| Monday, September 7 | Helpline | 8 a.m.–4:45 p.m. |
| | Residence Halls | 12 p.m.–2:30 p.m. |
| | Book Mark | 8:30 a.m.–6 p.m. |
| | Olin Hall walk up | 10 a.m.–4 p.m. |

SONGS YOU SHOULD KNOW

ALMA MATER

Words by John Helmer Olson '19

Gustavus Adolphus, Remember thy past!
Let songs of thy triumphs Be borne on the blast.
O'er prairie and mountain Forever let fame
Carve runes of thy glory, Thy deeds 'round thy name.

Gustavus Adolphus, Stand firm in the fight;
Plant proudly thy banner On victory's height!

Thrice hail! Alma mater! Thy children are true.
We love thee, forever Our love we renew.
We stand by thy standard, Our phalanx is strong.
Thy battle: our battle, Gustavus, live long!

Gustavus Adolphus, Stand firm in the fight;
Plant proudly thy banner On victory's height!

GUSTIE ROUSER

Come on you Gusties, fight on, fight on
Shout out the battle cry of victory
come on you Gusties, fight to the end
Fight on for Dear Ol' G.A.C.

Gusties will shine tonight—
Gusties will shine!

Gusties will shine tonight—
Gusties will shine!

Gusties will shine tonight—
Gusties will shine!

Beat 'em, bust 'em, that's our custom
Gusties will shine!

LATE NIGHT MUNCHIES

DELIVERED

Domino's Pizza
934-9112

Erberts & Gerberts
Subs and Clubs
934-2020

Godfather's Pizza
931-6140

P.J.'s Pizzeria
934-8993

CARRY OUT ONLY FROM 5-11PM

Cyclone Pizzeria
(Market Place, starting
September 8th)
933-7777

FACES TO REMEMBER: YOUR



SHEILA ARNOLD

YEAR Senior
MAJOR Health Fitness
HOMETOWN Grand Rapids, MN
FAVORITE PLACE ON CAMPUS
 Softball Fields



LILLIA BENSON

YEAR Junior
MAJOR Nursing
HOMETOWN Bloomington, MN
FAVORITE PLACE ON CAMPUS
 Johns Family Courtyard



SARA BENTLEY

YEAR Senior
MAJOR Nursing
HOMETOWN Owatonna, MN
FAVORITE PLACE ON CAMPUS
 Old Main



AMARA BERTHELSEN

YEAR Senior
MAJOR Communication Studies
HOMETOWN Midlothian, TX
FAVORITE PLACE ON CAMPUS
 Center for Vocational Reflection



JENNIFER BROMAN

YEAR Senior
MAJOR Communication Studies and
 Business Management
HOMETOWN Bloomington, MN
FAVORITE PLACE ON CAMPUS
 Top floor of Old Main



JOE CARLSON

YEAR Sophomore
MAJOR Physics
HOMETOWN Shoreview, MN
FAVORITE PLACE ON CAMPUS
 Caf



JILLIAN CARNEY

YEAR Junior
MAJOR Health Fitness
HOMETOWN New Brighton, MN
FAVORITE PLACE ON CAMPUS
 Lund



HALEY CARPENTER

YEAR Junior
MAJOR Health Fitness
HOMETOWN Lincoln, NE
FAVORITE PLACE ON CAMPUS
 Kresge Dance Studio



ELIZABETH COCO

YEAR Sophomore
MAJOR Religion and English
HOMETOWN Velletri, Italy
FAVORITE PLACE ON CAMPUS
 Womyn's Awareness Center
 and Diversity Center



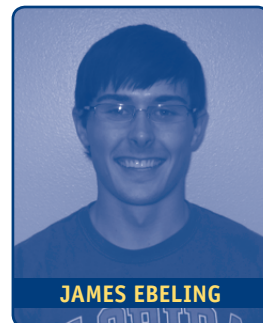
ZACK COLES

YEAR Senior
MAJOR Music Education
HOMETOWN Cooperstown, ND
FAVORITE PLACE ON CAMPUS
 Björling Recital Hall and the Arb



KATIE CUMMINGS

YEAR Senior
MAJOR Management
HOMETOWN Aitkin, MN
FAVORITE PLACE ON CAMPUS
 The Rugby Pitch



JAMES EBELING

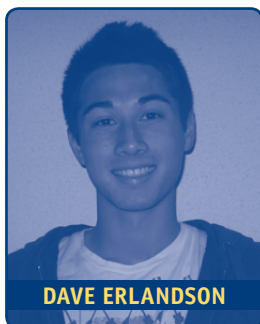
YEAR Junior
MAJOR Biology
HOMETOWN Owatonna, MN
FAVORITE PLACE ON CAMPUS
 Lund

GUSTIE GREETERS!



JOSH ELLEDGE

YEAR Junior
MAJOR Biology
HOMETOWN Brooklyn Park, MN
FAVORITE PLACE ON CAMPUS Caf



DAVE ERLANDSON

YEAR Junior
MAJOR Biology
HOMETOWN Maplewood, MN
FAVORITE PLACE ON CAMPUS Gustavus Track



JAIMIE FAREL

YEAR Senior
MAJOR Communication Studies
HOMETOWN Apple Valley, MN
FAVORITE PLACE ON CAMPUS The Arb with Lilacs



KYLE GOODFELLOW

YEAR Senior
MAJOR Psychology
HOMETOWN Mound, MN
FAVORITE PLACE ON CAMPUS The Arb with Jim Gilbert



AMY GOSEWISCH

YEAR Senior
MAJOR Geography
HOMETOWN Victoria, MN
FAVORITE PLACE ON CAMPUS Library



BRIANNA HEINRICH

YEAR Junior
MAJOR Psychology
HOMETOWN Medford, MN
FAVORITE PLACE ON CAMPUS Couches in Confer/Vickner



EMILY JOHNSON

YEAR Junior
MAJOR Nursing
HOMETOWN Gloucester, MA
FAVORITE PLACE ON CAMPUS Hello Walk



KATELYN JOHNSON

YEAR Senior
MAJOR Communication Studies
HOMETOWN Midlothian, TX
FAVORITE PLACE ON CAMPUS Christ Chapel



AARON KHARE

YEAR Sophomore
MAJOR Biology
HOMETOWN Bangalore, India
FAVORITE PLACE ON CAMPUS Swedish House



AMBER KIRK

YEAR Junior
MAJOR Biology
HOMETOWN Coon Rapids, MN
FAVORITE PLACE ON CAMPUS Old Main Hill



IRMA MARQUEZ

YEAR Sophomore
MAJOR Undecided
HOMETOWN St. James, MN
FAVORITE PLACE ON CAMPUS Diversity Center and Old Main



LEIGH ANN MASON

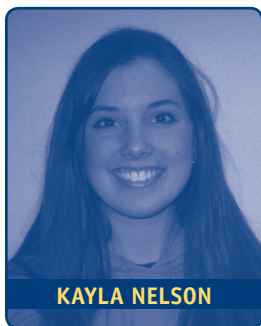
YEAR Junior
MAJOR Psychology
HOMETOWN Woodbury, MN
FAVORITE PLACE ON CAMPUS The Courtyard Café

MORE GUSTIE GREETERS!



BRITTANI MATZKE

YEAR Senior
MAJOR Elementary Education
HOMETOWN Buffalo, MN
FAVORITE PLACE ON CAMPUS
Caf during lunch rush



KAYLA NELSON

YEAR Senior
MAJOR Religion
HOMETOWN Annandale, MN
FAVORITE PLACE ON CAMPUS
The Arb in the Fall



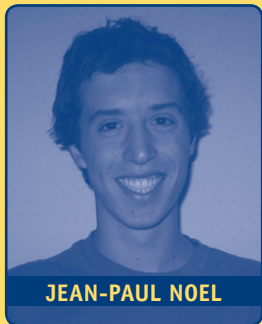
KELLY NELSON

YEAR Senior
MAJOR Communication Studies
HOMETOWN Walker, MN
FAVORITE PLACE ON CAMPUS
Anderson Theatre



BERGIT NERHEIM

YEAR Junior
MAJOR Communication Studies
HOMETOWN Minnetrista, MN
FAVORITE PLACE ON CAMPUS
Deep in the woods of the Arb



JEAN-PAUL NOEL

YEAR Sophomore
MAJOR Psychology
HOMETOWN Barcelona, Spain
FAVORITE PLACE ON CAMPUS
Swedish House



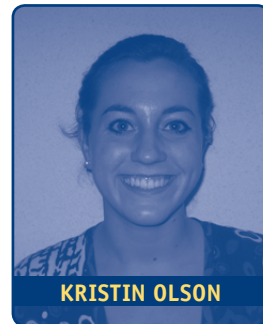
WHITNEY O'CONNELL

YEAR Sophomore
MAJOR Spanish/History
HOMETOWN Excelsior, MN
FAVORITE PLACE ON CAMPUS
Courtyard Café



JOHANNA OLMSTEAD

YEAR Senior
MAJOR Elementary Education
HOMETOWN Richfield, MN
FAVORITE PLACE ON CAMPUS
The Dive



KRISTIN OLSON

YEAR Sophomore
MAJOR Biology
HOMETOWN Mankato, MN
FAVORITE PLACE ON CAMPUS
Caf



MATTHEW OLSON

YEAR Senior
MAJOR Financial Economics
HOMETOWN Mankato, MN
FAVORITE PLACE ON CAMPUS
Courtyard Café



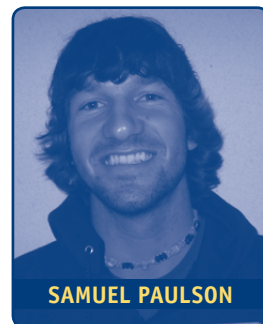
ALEX PARKER

YEAR Senior
MAJOR Communication Studies
HOMETOWN Stillwater, OK
FAVORITE PLACE ON CAMPUS
The Adirondack chairs on Old
Main Hill



ABBE PAULHE

YEAR Senior
MAJOR Psychology
HOMETOWN St. Croix Falls, WI
FAVORITE PLACE ON CAMPUS
Lund



SAMUEL PAULSON

YEAR Senior
MAJOR Management
HOMETOWN Waseca, MN
FAVORITE PLACE ON CAMPUS
Matt Schueffner's Room



HALEY PRITTINEN

YEAR Senior
MAJOR Biochemistry and Molecular Biology
HOMETOWN Virginia, MN
FAVORITE PLACE ON CAMPUS Running Trails in the Arb



ALAINA RAMSBURG

YEAR Sophomore
MAJOR Business Management
HOMETOWN Eden Prairie, MN
FAVORITE PLACE ON CAMPUS The Adirondack chairs on Old Main Hill



KELSEY SCHROEDER-GASSER

YEAR Junior
MAJOR Psychology and Spanish
HOMETOWN Monona, WI
FAVORITE PLACE ON CAMPUS The Adirondack chairs on Old Main Hill



MATT SCHUEFFNER

YEAR Senior
MAJOR Communication Studies
HOMETOWN Stillwater, MN
FAVORITE PLACE ON CAMPUS Wherever there are Gustie Greeters



BRIAN SMITH

YEAR Junior
MAJOR Economics
HOMETOWN Eden Prairie, MN
FAVORITE PLACE ON CAMPUS Gus Young Court



EMMA STRAND

YEAR Junior
MAJOR Communication Studies
HOMETOWN Woodbury, MN
FAVORITE PLACE ON CAMPUS Christ Chapel



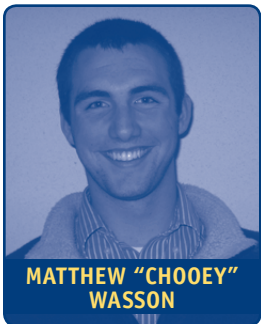
MEGAN THOMPSON

YEAR Senior
MAJOR Biology
HOMETOWN Hayward, MN
FAVORITE PLACE ON CAMPUS Gymnastics Gym



MATT THON

YEAR Junior
MAJOR Biology
HOMETOWN Medford, MN
FAVORITE PLACE ON CAMPUS Lund



MATTHEW "CHOOEY" WASSON

YEAR Sophomore
MAJOR Communication Studies
HOMETOWN Duluth, MN
FAVORITE PLACE ON CAMPUS Front steps of Old Main and Shakespeare Pit at Night



WHITNEY WESTLEY

YEAR Junior
MAJOR Geography
HOMETOWN Detroit Lakes, MN
FAVORITE PLACE ON CAMPUS Campus Center



JULIO ZELAYA

YEAR Sophomore
MAJOR Political Science
HOMETOWN St. James, MN
FAVORITE PLACE ON CAMPUS Alumni Hall for Swing Club



ORIENTATION 2009
prepared and published by
Gustavus Student Activities | 933-7598