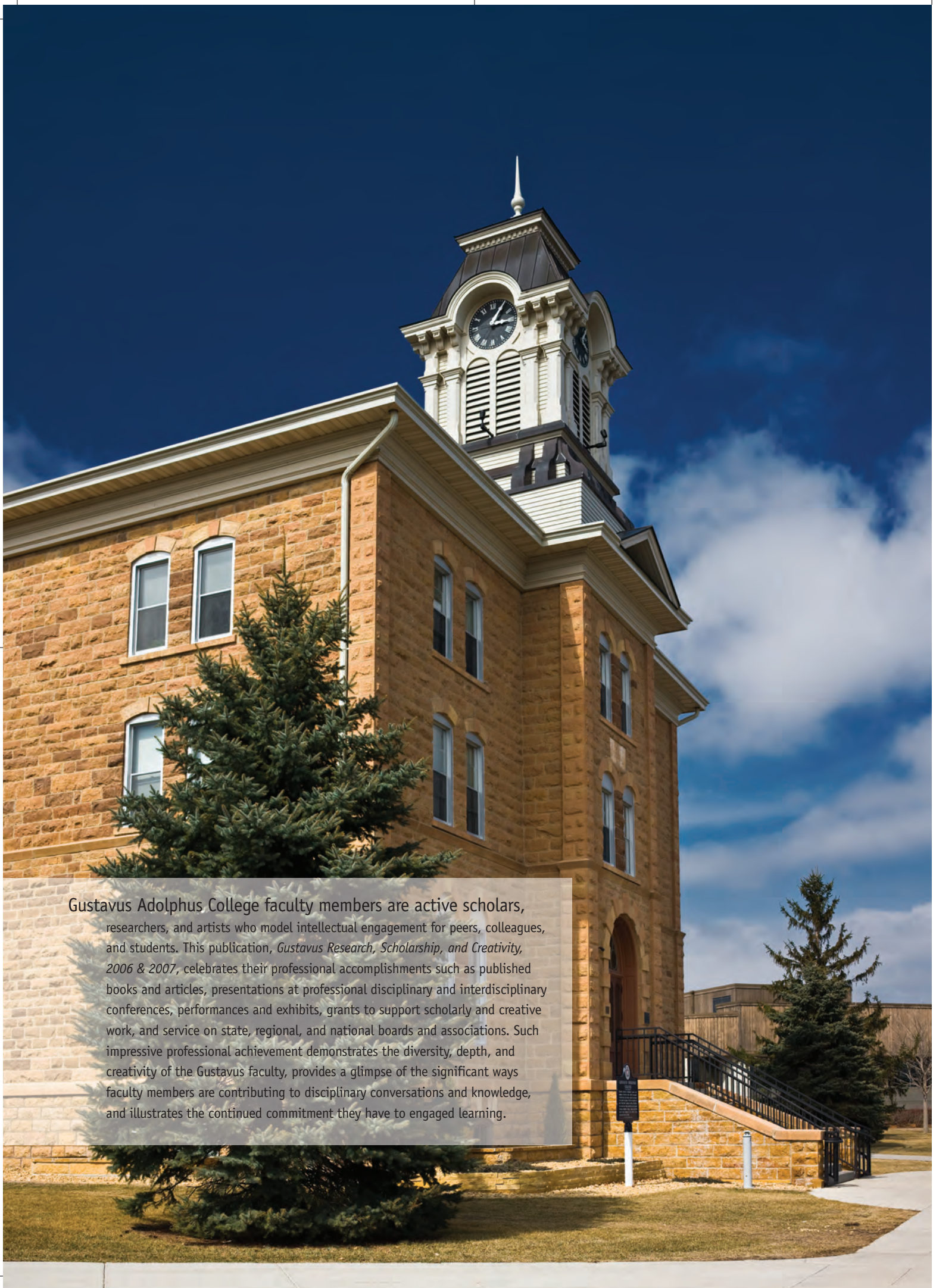


Gustavus research scholarship and creativity 2006 & 2007





Gustavus Adolphus College faculty members are active scholars, researchers, and artists who model intellectual engagement for peers, colleagues, and students. This publication, *Gustavus Research, Scholarship, and Creativity, 2006 & 2007*, celebrates their professional accomplishments such as published books and articles, presentations at professional disciplinary and interdisciplinary conferences, performances and exhibits, grants to support scholarly and creative work, and service on state, regional, and national boards and associations. Such impressive professional achievement demonstrates the diversity, depth, and creativity of the Gustavus faculty, provides a glimpse of the significant ways faculty members are contributing to disciplinary conversations and knowledge, and illustrates the continued commitment they have to engaged learning.

from the provost

This spring, in collaboration with the John S. Kendall Center

for Engaged Learning and with the expertise of College Relations, the Office of the Provost is honored to share with the Gustavus community this publication that acknowledges our faculty for their leadership as creative teacher-scholars. Gustavus prides itself as a community of teachers dedicated to student learning, and we support faculty members in their pursuit of scholarship and creative inquiry as part of professional development. Our commitment to this facet of our vocation, in fact, brings vitality and insight into the classroom, studio, performance space, and laboratory just as our work with students informs our scholarly and creative endeavors.

We also recognize faculty colleagues who will retire at the end of the year for their sustained and committed contributions to our community. Claude Brew (English), Bill Heidcamp (Biology), Greg Mason (English), and Larry Potts (Chemistry) have been a part of the Gustavus community for a combined total of 147 years. In addition to their own scholarship, the many contributions of our retirees include their participation in hiring many of those whose names appear in this publication and their leadership in developing the systems and policies that made possible the rich scholarly and creative achievements of their colleagues.

Much of this work reflects the efforts and accomplishments of individuals whose work is disciplined-based and intended for other communities of scholars; whose work, even when collaborative, is not always shared broadly across our campus; or whose work really does represent the stereotypic late nights at the canvas, the musical score, the laboratory bench, or the computer screen. Although we might be partially defined by our work as individuals, we are united as a community by our shared commitment to that work. This publication is printed to publicly recognize the faculty members who provide the leadership and dedication to their profession that help define Gustavus as a community of teacher-scholars.



Mary E. Morton
Provost and Vice President for Academic Affairs
Gustavus Adolphus College
May 2008

Gustavus Research | Scholarship | Creativity

2006 & 2007

Jennifer K. Ackil

Associate Professor, Psychology

- "Talking about Twisters: Relations between Mothers' and Children's Contributions to Conversations about a Devastating Tornado" (with P.J. Bauer, M.M. Burch, and D.L. VanAbbema), *Journal of Cognition and Development*, 8.4, 2007: 371-399.
- "Is Forced Confabulation More Dangerous than Memory Implantation?" (with M. Zaragoza), Annual Meeting of the Psychonomic Society, November 2007.

Sidonia Alenuma

Assistant Professor, Education

- "Urban Schools, and Educational Reform: The Context, Utility, Pros and Cons of the Magnet Example" (with H.K. Wright), *Studies in the Postmodern Theory of Education*, 306, 2007: 211-221.

Florence Amamoto

Associate Professor, English

- "Opportunities and Issues: Reflections on Talking about Faith in a Faith-Based Institution," eds. Brian T. Johnson and Carolyn R. O'Grady, *The Spirit of Service: Exploring Faith, Service, and Social Justice in Higher Education*, Anker, 2006: 23-37.
- "Waking Up in Washington: Dreaming and Waking in John Okada's *No-No Boy* and Momoko Iko's *Gold Watch*," Western Literature Annual Conference, October 2007.
- "Gustavus as a Mentoring Community" (with J. Johnson), Advising for Vocation Faculty Workshop, Concordia, Moorhead, Minn., August 2007.

Elizabeth Baer

Professor, English

- "Service Learning for Social Justice: Moving Faculty Commitment from Personal to Pedagogical through Faculty Development," eds. Brian T. Johnson and Carolyn R. O'Grady, *The Spirit of Service: Exploring Faith, Service, and Social Justice in Higher Education*, Anker, 2006: 191-208.
- Review: *Teaching the Representation of the Holocaust*, eds. Marianne Hirsch and Irene Kacandes, and "Voices & Views: A History of the Holocaust," ed. Deborah Dwork, *Holocaust and Genocide Studies* 20.1, Spring 2006: 134-138.
- "William Gropper, 'The Wanderer,' and the Warsaw Ghetto," (with D. Myers), *FOCUS IN/ON*, Hillstrom Museum of Art, Fall 2006.
- "W. G. Sebald's Austerlitz: Intertextuality as Restitution," German Studies Association Conference, October 2007.
- "The Golem Redux: Intertextuality in Contemporary Holocaust Fiction," Lessons and Legacies Conference, November 2006.
- "International Service Learning: Social Justice on Other Soil," Campus Compact Conference, October 2006.
- "Adorno Rebuked: Golems in Contemporary Jewish American Literature," Trajectories of Memory Conference, March 2006.
- "Service Learning for Social Justice: A Pedagogy of Engagement" (with L. Behling and N. Buhmann), American Association of Colleges and Universities Annual Convention, January 2006.
- "A History of Women's Needlework" (with C. O'Grady), Winona State University, March 2007.
- "Did Gender Matter? Women and Genocide," Institute for Global Studies, July 2006.
- "Real Lives: Stories of Hidden Children

in the Holocaust," Minnesota Historical Society, July 2006.

- Residency, Anderson Center for Interdisciplinary Studies, Red Wing, Minn., September 2007.
- "The Jewish Legend of the Golem," Gustavus Adolphus College Research, Scholarship and Creativity Grant, 2007, \$2,000.
- North Central Accreditation Association Academic Review Council, 2005-2009.

Laura L. Behling

Associate Professor, English

- Editor and "Introduction," *Hospital Transports: A Memoir of the Embarkation of the Sick and Wounded from the Peninsula of Virginia in the Summer of 1862*, The State University of New York Press, Paperback, 2006.
- "Meeting the Millennial Generation Halfway: Reconceptualizing Faculty Work," *Network: A Journal of Faculty Development*, Spring 2007: <http://www.nyu.edu/frn/publications/millennial.student/network-journal/Articles/meeting-halfway-behling.html>.
- "Politics and the Pandemic: HIV/AIDS, Africa, and the Discourse of Disability," *Review of Disability Studies*, 2.3, 2006: 97-107.
- "Liberal Arts Colleges and The Spellings Commission: Carpe Diem" (with M. Maguire), *LiberalArtsOnline*, 6.10, November 2006: http://liberalarts.wabash.edu/cila/home.cfm?news_id=4079.
- "The Necessity of Disability in Flannery O'Connor's 'Good Country People' and 'The Lame Shall Enter First,'" *Flannery O'Connor Review*, 4, Spring 2006: 88-98.
- "The Laboratory: A Model for Teaching the Elements of Literary Studies," *Radical Pedagogy*, 8.1, Summer 2006: http://radicalpedagogy.icaap.org/content/issue8_1/behling.html.



Claude Brew

Gustavus faculty member 1969–2008

"I wanted to be a teacher ever since I stopped wanting to be a fireman," recalled English professor Claude Brew, sipping a cup of coffee and looking back on 39 years of teaching at Gustavus.

Growing up in Alaska, he idealized the profession. Early on, he ruled out high school teaching, drawn instead to the allure of a collegiate lifestyle. "I imagined that a professor wears a tweed jacket with elbow patches and tamps his pipe, thinking big thoughts," he said. Little did he know then what he knows now, 27 faculty and administrative committee terms later: "Actually, you spend a surprising amount of time in meetings. That's fine, of course, but it's not the part I will miss most."

What he'll miss is the teaching. "Something magic happens when you

go into a classroom and shut the door behind you," he said. "You know, I can't believe that I've taught some courses for more than 40 years, and I still hear something new from students, something I've never thought of, or that no one ever noticed before in a text. It's incredible."

Brew has taught a wide range of literature, including such courses as British Literature since 1789, The Age of Satire, The Life and Works of John Keats, Jane Austen, Fiction and Film, Hemingway and Faulkner, and The Brontës.

Brew anticipates that the coming years will bring big change to his field. "What constitutes what we need

to teach is changing dramatically. It used to be clear; we taught the Western canon. Today, literature is defined more broadly and this will cause dramatic readjustments."

Brew stays in very good touch with former students who are newer to college teaching. He is excited for them as they forge new directions in pedagogy. English professors of

"Something magic happens when you go into a classroom and shut the door behind you."

tomorrow will find teaching as fulfilling as he has found it, if not more, he said, because "something extraordinary will always go on in the classroom. This is the work that feeds you."

- "Mystery and detective fiction," eds. Tom Quick and Gary Scharnhorst, *American History through Literature 1870-1920*, Charles Scribner's Sons, 2006: 737-742.
- Review: "Sites of Autopsy in Contemporary Culture," *Midwest Modern Language Association Journal*, Spring 2007: 156-158.
- "Contemporary U.S. Immigration Narratives: Politics in Prose," Seoul National University Annual American Studies Institute International Conference, October 2007.
- "Engaging Arts & Sciences Faculty in the NCATE Process: A Facilitated Discussion" (with J. Clementson and R. Sandidge), National Council for the Accreditation of Teacher Education (NCATE)/American Association for Colleges of Teacher Education (AACTE) Accountability Conference, September 2007.
- "Relationship Building Between Education and Arts & Sciences Faculty" (with J. Clementson), National Council for the Accreditation of Teacher Education (NCATE)/American Association for Colleges of Teacher Education (AACTE) Accountability Conference, September 2006, 2007.
- "Meeting the Millennial Generation Halfway: Experiential Education for Students and Faculty," Faculty Resource Network Annual Conference, November 2006.
- "Service Learning for Social Justice: A Pedagogy of Engagement" (with E. Baer and N. Buhmann), American Association of Colleges and Universities Annual Convention, January 2006.
- Session Chair: "The Undergraduate Student as Scholar: Programs and Curricula," Modern Language Association Annual Convention, December 2007.
- Session Chair: "The Undergraduate Student as Scholar: Courses and Seminars," Modern Language Association Annual Convention, December 2007.

- "The Virtual Human," Gustavus Adolphus College Research, Scholarship, and Creativity Grant, 2006, \$2,100.
- Elected, Executive Committee on Teaching as a Profession, Modern Language Association, 2006-2010.
- Appointed, American Fellowships Awards Panel, American Association for University Women Educational Foundation, 2006-2009.
- Faculty Fellow, American Association of Colleges and Universities' Institute for Experiential Learning, and the American Association of Colleges for Teacher Education, Washington, D.C., Spring 2006.

Mark Bjelland

Associate Professor, Geography

- "The Quest for Authentic Place? The Production of Suburban Alternatives in Minnesota's St. Croix River Valley" (with L. Cowger '03, M. Maley '04, and L. Barajas '02), *Urban Geography*, 27.3, 2006: 253-270.
- "Faith, Social Justice and Service Learning in Environmental Studies: The Struggle for Integration," eds. Brian T. Johnson and Carolyn R. O'Grady, *The Spirit of Service: Exploring Faith, Service, and Social Justice in Higher Education*, Anker, 2006: 69-86.
- "The Homes Where We Live," ed. David Koetje, *Living the Good Life on God's Good Earth*, CRC Publications, 2006: 25-32.
- Review: "From Love Canal to Environmental Justice: The Politics of Hazardous Waste on the Canada-U.S. Border," *Urban Geography*, 27.2, February 2006: 194-195.
- Review: "Designing America's Waste Landscapes," *The Professional Geographer*, 58.1, February 2006: 120-121.
- "Millennial Dreams: The Challenges of Creating Sustainable Communities," Association of American Geographers Annual Conference, April 2007.
- "The Ivory Tower and the Bulldozer:

- Colleges as Accidental Developers and Urban Planners," Conservation, Land Management and Stewardship: A Cross-Campus Symposium, July 2006.
- "Brownfields and the Divergent Faces of Sequent Occupance," University of Minnesota, October 2007.
- "Towards an Urban Renaissance in the U.K.," Minnesota State University, Mankato, November 2006.
- "Young Adults in Minnesota: A Geographical Analysis," Center for Rural Policy Development, October 2007.
- "The Changing Spatial Patterns of Lutherans in Minneapolis," Evangelical Lutheran Church in America, Minneapolis Synod District Council, September 2007.
- "Hurricanes, Natural Hazards and the Gulf Coast Region," Seniors Active Learning Together, Spring Seminar Series, January 2006.
- "One World, Many Peoples: Theology, Geography, and the Problem of the One and the Many," University of Minnesota, 2006.
- "Young Adults in Minnesota: A Geographical Analysis," Center for Rural Policy Development, 2007, \$1,800.
- "Changing Faces and Spaces of Lutherans in Minneapolis: A Spatial Analysis," Evangelical Lutheran Church in America, Minneapolis Synod, 2007, \$4,100.

Margaret C. Bloch Qazi

Assistant Professor, Biology

- "Emergence of Sperm from Female Storage Sites has Egg-Influenced and Egg-Independent Phases in *Drosophila melanogaster*" (with M.F. Wolfner), *Biology Letters*, 2.1, 2006: 128-130.
- "Relating Chromosome Regions to Fertility Phenotypes in Female *Drosophila melanogaster*" (with I. Weeks '09, T. Meist '07, A. Berger '09, and K. Osterman '09), 16th Annual Developmental Biology Center Symposium, October 2007.
- "Female Control over Sperm Storage

in the Fly, *Drosophila melanogaster*," Gustavus Adolphus College Research, Scholarship, and Creativity Grant, 2007, \$1,440.

- "Second Chromosome Deficiency Screen for Genes with Haploin Sufficient Effects on Female Sperm Storage in *Drosophila melanogaster*" (with I. Weeks '09), Greater Gustavus Fund Student-Faculty Collaborative Research, 2007, \$3,500.

Priscilla Briggs

Assistant Professor, Art and Art History

- "Mac," *Light and Lens: Photography in the Digital Age*, Focal Press, 2007.
- "Little Dreamer," *Yummy*, Nexus Foundation, Philadelphia, Pa., December 2007–February 2008.
- "Scenic Drive," *Visual Noise*, UMC Art Gallery, University of Colorado, Boulder, Colo., April–June 2007.
- *Market*, Solo Exhibition, The Art Center of Saint Peter, St. Peter, Minn., February–March 2006.
- Curator, *Imagining Namibia*, The Art Center of Saint Peter, November–December 2006.
- "Untitled," *Soul Searching*, Cyrus M. Running Gallery, September–October 2006.
- "True Confessions," *Women's Caucus for the Arts International Video Shorts Festival*, January 2006.
- "Video Poems: A Collaboration with Minnesota Spoken Word Association" (with N. Hansen '09), Gustavus Adolphus College Presidential Faculty-Student Collaboration Grant, 2007, \$7,500.

Scott Bur

Assistant Professor, Chemistry

- "1,3-Sulfur Shifts: Mechanism and Synthetic Utility," *Topics in Current Chemistry*, 247, 2007: 125–171.
- "Tandem Reactions in Heterocyclic Synthesis" (with A. Padwa), *Advances in Heterocyclic Chemistry*, 94, 2007: 1–105.
- "The Domino Way to Heterocycles"

(with A. Padwa), *Tetrahedron*, 64, 2007: 5341–5378.

- "1,5-electrocyclization Reactions Using Vinyl Glycine Derivatives" (with N. Serratore '10), Greater Gustavus Fund Student-Faculty Collaborative Research, 2007, \$4,000.
- "Diels-Alder Reactions of 2-Silyloxyfurans: Scope and Limitations," American Chemical Society – Petroleum Research Fund, 2007, \$65,000.

Kevin Byrne

Professor, History

- Review: "Minneapolis and the Age of Railways," *The Annals of Iowa*, Spring 2007: 383–384.

Joel L. Carlin

Assistant Professor, Biology

- "New Microsatellite Resources for Groupers (Serranidae)" (with M. A. Ramirez, J. Patricia-Acevedo, S. Planas, S. M. Funk, and W. O. McMillan), *Molecular Ecology Notes* 6.3, 2006: 813–817.
- "Phylogeography of Two Atlantic Squirrelfishes (family Holocentridae): Exploring Links Between Pelagic Larval Duration and Population Connectivity" (with B. W. Bowen, A. L. Bass, A. J. Muss, and D. R. Robertson), *Marine Biology*, 149.4, 2006: 899–913.
- "Aquatic Underdogs: Molecular Ecology and Fish Conservation," University of Minnesota, Mankato, February 2007.
- "Molecular Sequence Data and Alignment Methodologies," University of Minnesota, Mankato, March 2007.
- "Natural History of the Margined Sculpin *Cottus marginatus* (Cottidae), a Species of Special Concern in Oregon and Washington," Annual Meeting of the American Fisheries Society, September 2007.
- "Conservation Genetics of a Threatened Streamfish" (with R. Molitor '10), Greater Gustavus Fund

Student-Faculty Collaborative Research, 2007, \$2,500.

- Appointed, Chair of the American Fisheries Society Electronic Services Advisory Board.
- Appointed, Workshop Chair, "Information Technology at AFS," Annual Meeting of the American Fisheries Society, September 2007.

John J. Clementson

Professor, Education, Grace and Bertil Pehrson Chair in English

- "Information Processing Model: Attached or Trashed," ed. Sheryl Feinstein, *Encyclopedia of Brain Research*, 2006: 256–262.
- "Relationship Building Between Education and Arts & Sciences Faculty" (with L. Behling), National Council for the Accreditation of Teacher Education (NCATE)/ American Association for Colleges of Teacher Education (AACTE) Accountability Conference, September 2006, 2007.
- "Latino Academy: A Faculty Development Model" (with D. Pitton), Collaboration Conference, 2007.
- "Access for All: Responding to the Changing Demographics in Rural Minnesota" (with V. Alba and K. Bode), Minnesota Association of Colleges for Teacher Education, 2006.
- "Engaging Arts & Sciences Faculty in the NCATE Process: A Facilitated Discussion" (with L. Behling and R. Sandidge), National Council for the Accreditation of Teacher Education (NCATE)/ American Association for Colleges of Teacher Education (AACTE) Accountability Conference, September 2007.
- "Latinos in Our Public Schools: Access for All," Minnesota Association of Colleges for Teacher Education, 2007.
- "Preparing for the PEPER process" (with J. Strand), Minnesota Association of Colleges for Teacher Education, 2007.
- Elected, Representative to the American Association of Colleges for Teacher Education.



Scott Bur (Assistant Professor, Chemistry), supported by a grant from the American Chemical Society-Petroleum Research Fund, works on finding less resource-intensive ways to make molecules of pharmaceutical interest.

- Elected, Legislative Sub-Committee, Minnesota Association of Colleges for Teacher Education Executive Council.
- Elected, Minnesota Association of Colleges for Teacher Education Executive Council.
- Appointed, North Central Association of Colleges and Schools Commission on Institutions of Higher Education Consultant-Evaluator.

Jane Coleman

Emerita Professor, Nursing

- "Dying Consciously: A Nurse's Cancer Journey" (with N. Manahan, B. Bohan, and W. Manahan), 27th Annual American Holistic Nurses Association, June 2007.

Thia Cooper

Assistant Professor, Religion

- "Controversies in Political Theology: Development or Liberation?" eds. Marcella Althaus-Reid and Lisa Isherwood, *Controversies in Contextual Theologies*, SCM Press, 2007.
- Translation: "Commodity Aesthetics and the Erotics of Relationship" by Nancy Cardoso Pereira, ed. Marcella Althaus-Reid, *Liberation Theology and Sexuality*, Ashgate, 2006.
- Session Chair: "Liberation Theologies at the Dawn of the Twenty-First Century: Between Sex, Gender, Class and Race," American Academy of Religion Annual Meeting, November 2007.
- "Diversity Intersections: Race and Religion," Minnesota State Colleges and Universities, April 2007.
- "Christian Theology: Development or

Liberation?" Upper Midwest American Academy of Religion Annual Meeting, April 2007.

- "Living into a New Earth," CHARIS Ecumenical Center Summer Theological Conference, July 2006.
- "Controversies in Political Theology," Gustavus Adolphus College Research, Scholarship, and Creativity Grant, 2006, \$2,200.
- Chair, Liberation Theologies Consultation in the American Academy of Religion.

Patricia Costello

Assistant Professor, Psychology

- "Processing of Invisible Stimuli: Faster for Upright Faces and Recognizable Words to Overcome Interocular Suppression" (with Y. Jiang and S. He), *Psychological Science*, 18.4, 2007: 349-357.

- "A Gender and Sexual Orientation-Dependent Spatial Attentional Effect of Invisible Images" (with Y. Jiang, F. Fang, M. Huang, and S. He), *Proceedings of the National Academy of Sciences*, 103.45, 2006: 17048–17052.

Jeff Dahlseid

Associate Professor, Biology and Chemistry, Glass, Hamrum, Langsjoen Professor in Biology

- "No-nonsense mRNA Decay: Wild-type mRNA Substrates for Upf Proteins," University of Arizona, Tucson, July 2006.
- Appointed, External Grant Reviewer for the National Science Foundation.
- Appointed, Visiting Scholar, Department of Molecular and Cellular Biology, University of Arizona, Tucson, July 2006–July 2007.
- Appointed, Rotating Program Officer for Research Corporation, March–July 2007.

Laurent Déchery

Professor, Modern Languages, Literatures, and Cultures

- *Le premier regard; essai d'anatomie métaphysique*, Paris, L'Harmattan, 2007.
- "1913, Introduction à la Modernité," American Association of Teachers of French Annual Convention, July 2007.
- "Théorie de la lecture dans Mercure d'Amélie Nothomb," The 20th- and 21st-Century French and Francophone Studies International Colloquium, March 2007.
- Elected, President of the American Association of Teachers of French, Minnesota Chapter, 2005–2007.

Carolyn Pillers Dobler

Professor, Mathematics and Computer Science

- Review: "The Essence of Multivariate Thinking: Basic Themes and Methods," *The American Statistician*, August 2006: 292.

- Review: "SAS Guide to Report Writing: Examples," *The American Statistician*, August 2006: 294.
- Review: "Matrix Algebra," *The American Statistician*, May 2006: 207.
- Review: "Using SPSS for Windows: Data Analysis and Graphics (2nd ed.)," *The American Statistician*, May 2006: 207.
- Review: "A Step-by-Step Approach to Using SAS for Univariate and Multivariate Statistics (2nd ed.)," *The American Statistician*, May 2006: 207.
- "How Is the TI-83 Calculator Changing How We Teach the Introductory Course in Statistics? Or Is It?" Joint Statistical Meetings, August 2006.
- "Implementing GAISE in Our Classrooms," Joint Statistical Meetings, July 2007.
- "Numbers Don't Lie" (with T. Kramer '07 and D. Johnson '07), United States Conference on Teaching Statistics, May 2007.
- Appointed, American Statistical Association-Mathematical Association of America Joint Committee on Undergraduate Statistics.

Bob Douglas

Professor, Geography

- "Joseph Nicollet's Map and GPS," *Past Place: Newsletter of the Historical Geography Specialty Group, Association of American Geographers*, 16.1, Fall/Winter 2007: 2–3.
- "Higher Ed's Role in the Future of Renewables and Efficiency," Minnesota's Energy Future: Community Energy and Economic Opportunity Forum, January 2006.
- "Regional Study for the Liberal Arts: An Appalachian Exemplar," National Endowment for the Humanities Summer Institute, June 2006.
- "Evolution of the Minnesota River Valley," EPA Conference, September 2006.
- "The Swedes and Sudanese in the Minnesota River Valley: Geographical Commonalities of Old and New

Immigration," Annual Meeting of the Prairie Division of the Canadian Association of Geographers, September 2006.

- "The Crossing: the Traverse des Sioux River Crossing," Treaty Site History Center, September 2007.
- "Joseph Nicollet's Map and GPS," Minnesota State University, Mankato, October 2007.

Eric Dugdale

Associate Professor, Classics

- Co-editor, *Greece and Rome, Texts and Contexts* (with J. Morwood), Cambridge University Press, 2007.
- Co-editor, *Cicero and the Roman Republic* (with J. Morwood), Cambridge University Press, 2007.
- Co-editor, *Herodotus and the Persian Wars* (with J. Morwood), Cambridge University Press, 2007.
- Co-editor, *Virgil, A Poet in Augustan Rome* (with J. Morwood), Cambridge University Press, 2007.
- "Athenian Men Watching Trojan Women: The Role of Tragedy in Athens," University of Georgia, March 2007.
- "Prophetic Voices in Sophocles," American Philological Association Annual Conference, January 2007.
- "Teaching Classics for Social Justice," Classical Association of the Midwest and South Conference, April 2006.
- "Greek Theatre in Context," Gustavus Adolphus College Research, Scholarship, and Creativity Grant, 2006, \$2,200.
- Appointed, Chair of Committee for Ancient and Modern Performance of American Philological Association, 2006–2007.
- Appointed, Organizer of Performing Ideology Panel at American Philological Association Conference, 2006.

Seán Easton

Assistant Professor, Classics

- "Eos Rhododaktylos: The Invocation of Homer in Terrence Malick's *The Thin Red Line*," Annual Meeting of the Pacific Ancient and Modern Language Association, November 2007.
- "A Lucanian Reading of Ovid's *Medea* (*De Bello Civili* 6 and *Metamorphoses* 7)," Annual Meeting of Classical Association of the Middle West and South, April 2007.

Eric Elias

Instructor, Biology

- "Tamoxifen Protects Against 17alpha-ethynylestradiol-induced Liver Damage and the Development of Urogenital Papillae in the Rainbow Darter (*Etheostoma caeruleum*)" (with E. Kalombo and S.D. Mercurio), *Environmental Toxicology and Chemistry*, 26.9, 2007: 1879-1889.

Casey D. Elledge

Assistant Professor, Religion

- *Resurrection: The Origins and Future of a Biblical Doctrine* (with J. Charlesworth, H. Boers, J. Crenshaw, and W. Willis), T. and T. Clark, 2007.
- *Life after Death in Early Judaism: The Evidence of Josephus*, Mohr (Siebeck), 2006.
- "The Prince of the Congregation: Qumran Messianism in the Context of Milhama," eds. Brent Strawn and Michael Davis, *Qumran Studies: New Approaches, New Questions*, Eerdmans, 2007: 178-207.
- "Resurrection of the Dead: Exploring Our Earliest Evidence Today," *Resurrection*, 2007: 21-52.
- "The Resurrection Passages of the Testaments of the Twelve Patriarchs: Hope for Israel in Early Judaism and Christianity," *Resurrection*, 2007: 79-103.
- "Contemporary Studies on Resurrection: An Annotated Bibliography," *Resurrection*, 2007: 233-240.
- "Berossus," *New Interpreter's*

Dictionary of the Bible, ed. Sakenfeld et al., Abingdon, 2006.

- "Rewriting the Sacred: Some Problems of Textual Authority in Light of the Rewritten Scriptures at Qumran," Society of Biblical Literature / American Academy of Religion Annual Convention, November 2007.
- "Josephus, Tacitus, and Suetonius: Jesus in the Eyes of Classical Historians," The Princeton-Prague Symposium on the Historical Jesus, April 2006.

Thomas Emmert

Professor, History

- Co-Editor, *South-Eastern Europe at the End of the Twentieth Century* (with C. Ingrao), Routledge, 2006.
- Review: "When Ethnicity Did Not Matter in the Balkans: A Study in Identity in Pre-Nationalist Croatia, Dalmatia and Slovenia in the Medieval and Early-Modern Periods," *Austrian Studies Newsletter*, 19.2, Fall 2007: 19, 25.
- "The ICTY - Perceptions of Bias," University of Minnesota ITV Course, April 2006.
- "Aftermaths: The Death of Milosevic and Its Impact on the Balkans and the ICTY," Center for Holocaust and Genocide Studies, April 2006.
- "Southeastern Europe at the Beginning of the Twenty-first Century: Challenging the Past and Looking for a Rainbow," Minnesota State University, Mankato, April 2007.
- Elected, Board of the North American Society for Serbian Studies, 2006.

David Fienen

Professor, Music, Ethel and Edgar F.

- *Johnson Professor in the Fine Arts*
- "Esther Williams, Art and Music," (with D. Myers), *Focus IN/ON*, Hillstrom Museum of Art, Fall 2007.
- Keyboardist, Mankato Symphony Orchestra Quarry Concert, June 2006.
- Faculty Organ Recital, Christ Chapel, Gustavus Adolphus College, September 2006.

- Pianist and Celeste player, Mankato Symphony Orchestra Christmas Concert, December 2006.
- Organist and Pianist, MUSICORUM Concerts, December 2006.
- Pianist and Celeste player, Mankato Symphony Orchestra Concert, Mankato Armory, February 2007.
- Pianist and Celeste player, Mankato Symphony Orchestra Subscription Concert, March 2007.
- Celeste player, Mankato Symphony Orchestra Christmas Concert, December 2007.
- "Jan Bender: Lutheran Church Musician in a Century of Tumult," Reformation Festival, Bethany Lutheran College, October 2006.

Barbara Fister

Professor, Library

- "One Book, One Campus: Exploring Common Reading Programs," *E-Source for College Transitions* 5.1, September 2007: <http://nrc.fye.sc.edu/esource/4%281%29.pdf>.
- "Crime Fiction with an Icelandic Accent: Barbara Fister on Arnaldur Indridason," *Shots*, March 2007: http://www.shotsmag.co.uk/features/2007/a_indridason/a_indridason.html.
- "The War Within: Matt Beynon Rees' Palestinian Mystery," *Mystery Scene* 98, February 2007: 28-31.
- "Wikipedia and the Challenge of Read/Write Culture," *Library Issues* 27.3, January 2007.
- "Inventing the Library," Ohio State University Libraries, December 2007.
- "Information Literacy in a Wired World," University of Illinois at Springfield, March 2007.
- "Libraries and the Cartography of Knowledge," Alaska Library Association Conference, February 2006.
- "Reading as a Contact Sport," Alaska Library Association Conference, February 2006.
- "Research as a Rhetorical Act," Alaska Library Association Conference, February 2006.
- "Assessing Libraries? Contribution to



Laurent Dechery (*Professor, Modern Languages, Literature, and Cultures*), author of *Le premier regard; essai d'anatomie métaphysique (2007)*, a multi-disciplinary approach on perception (mostly vision) as a model for knowledge and desire and as a source of inspiration in the 17th and 18th centuries.

Student Learning," Alaska Library Association Conference, February 2006.

- Appointed, Association of College and Research Libraries Blog Advisory Board and Contributing Author.
- Appointed, Contributor to the Association of College and Research Libraries, Free Exchange on Campus Coalition Blog.

Rebecca Taylor Fremo

Associate Professor, English

- "Redefining Our Rhetorical Situation: WPAs in the Small College Context," eds. Deborah Dew and Alice Horning, *Untenured Faculty as Writing Program Administrators: Institutional Practices and Politics*, ParLOUR Press, 2007: 191-218.
- "Writing Center and Diversity Center Partnerships: A Case Study,"

Conference on College Composition and Communication, March 2006.

- "Teaching (and) Writing without Composition" (with E. Bergman '07, K. Ellingsen '07, B. Lawley, and J. Walz '08), Minnesota State Colleges and Universities Conference on Composition, March 2007.
- "Still Processing," Southern Minnesota Poets Society Meeting, November 2007.

Mary Gaebler

Visiting Assistant Professor, Religion

- Review: "The Way That Leads There," Gilbert Meilaender, *Journal of Lutheran Ethics*, 8.3, March 2008: <http://www.elca.org/jle/article.asp?k=780>.
- "Political Divisions and Faith-Based Consensus Building," American Academy of Religion Upper Midwest Regional Meeting, April, 2007.

Judith M. Gardner

Emerita Professor, Nursing

- Appointed, Secretary, Advisory Committee, Minnesota Intercollegiate Nursing Consortium.
- Elected, Secretary, Board of Directors, Minnesota Intercollegiate Nursing Consortium.
- Elected, Executive Board, Chi at-Large Chapter, Sigma Theta Tau International.

Mimi Gerstbauer

Associate Professor, Political Science

- "Peace Profile: Kerr Eby" (with D. Myers), *Peace Review: A Journal of Social Justice*, 18.2, 2006: 289-298.
- "Faith, Peace, and Politics: Dwelling in Discomfort," eds. Brian T. Johnson and Carolyn R. O'Grady, *The Spirit of Service: Exploring Faith, Service, and Social*

Justice in Higher Education, Anker, 2006: 105–124.

- “The Sal y Luz Model for Peace Building in Colombia,” Peace and Justice Studies Association Annual Convention, October 2006.
- “Transnational Peace Building: Bringing Salt and Light to Colombia and the United States,” International Studies Association Annual Convention, March 2007.

Patric V. Giesler

Assistant Professor, Sociology and Anthropology

- Review: “Those Who Touch: Tuareg Women in Anthropological Perspective” by Susan J. Rasmussen, *Ethos: Journal of the Society for Psychological Anthropology*, December 2006: <http://www.anthro.uiuc.edu/ethos/BookReviews.html>.
- “Contingent Visions of the Promised Land: Deprivation versus Psychocultural Models of Millenarian Visions in Brazil,” *Society for the Anthropology of Religion*, April 2007.
- “When the Thaumaturge Becomes Millennial Prophet: A Comparative Study of the Early Stages of Backlander Brazilian Revitalization Movements,” *Central States Anthropological Society*, April 2006.
- “Ethnographer as Detective: Unraveling the Rise and Fall of a Brazilian ‘Cave Goddess Cult’ with Ritual Human Sacrifice,” Minnesota State University, Mankato, March 2006.

Christopher P. Gilbert

Professor, Political Science

- “Minnesota: Battleground Politics in a New Setting,” eds. John C. Green, Mark J. Rozell and Clyde Wilcox, *The Values Campaign? The Christian Right and the 2004 Elections*, Georgetown University Press, 2006: 143–157.
- “Representation and Legislative Power: Overcoming Rural Minnesota’s

Representational Deficit,” *Rural Minnesota Journal*, 1, 2006: 79–91.

- “The Resourceful Believer: Generating Civic Skills in Church” (with P. A. Djupe ‘93), *Journal of Politics*, 68.1, 2006: 116–127.
- “Whether to Adopt Statements on Homosexuality in Two Denominations” (with P. A. Djupe ‘93 and L. R. Olson), *Journal for the Scientific Study of Religion*, 45.4, 2006: 609–621.
- “Present But Not Accounted For? Gender Differences in Civic Resource Acquisition” (with P. A. Djupe ‘93 and A. E. Sokhey), *American Journal of Political Science*, 51.4, 2007: 906–920.
- “Active Learning in Library Instruction Sessions: Befriending Your Librarian” (with J. Gilbert ‘99), Collaboration Conference, November 2007.
- “The Embedded Librarian: Engaging Students in Library Research” (with J. Gilbert ‘99), Minnesota Library Association Conference, October 2007.
- “The Evolution of American Views on Church and State,” Oxford Round Table on The Separation of Church and State: The Decline and Fall? July 2007.
- “Present But Not Accounted For? Churches, Institutional Treatment, and Gender Differences in Civic Resources” (with P. A. Djupe ‘93 and A. E. Sokhey), Midwest Political Science Association Conference, April 2006.
- Minnesota Public Radio “Midday” and WCCO-AM “Morning Show with Dave Lee,” Commentaries on national political issues, 2006 and 2007.
- “The Evolution of American Views on Church and State,” Gustavus Adolphus College Research, Scholarship, and Creativity Grant, 2007, \$2,000.
- Proposal reviewer, National Science Foundation grants in Political Science research, 2006 and 2007.

Julie Gilbert

Assistant Professor, Library

- “Active Learning in Library Instruction Sessions: Befriending Your Librarian” (with C. Gilbert), Collaboration Conference, November 2007.
- “The Embedded Librarian: Engaging Students in Library Research” (with C. Gilbert), Minnesota Library Association Conference, October 2007.
- “Operation MnObe MnOPAC: Koha, WorldCat and the IT Perspective” (with A. Fry, K. Martin, and J. Twaddle), Minnesota Oberlin Group Libraries Meeting, April 2007.
- “Am I Dusting Those Shelves for Nothing? Reference Book Use in a Small Public Library,” Minnesota Library Association Conference, September 2006.

Alan D. Gishlick

Visiting Assistant Professor, Geology

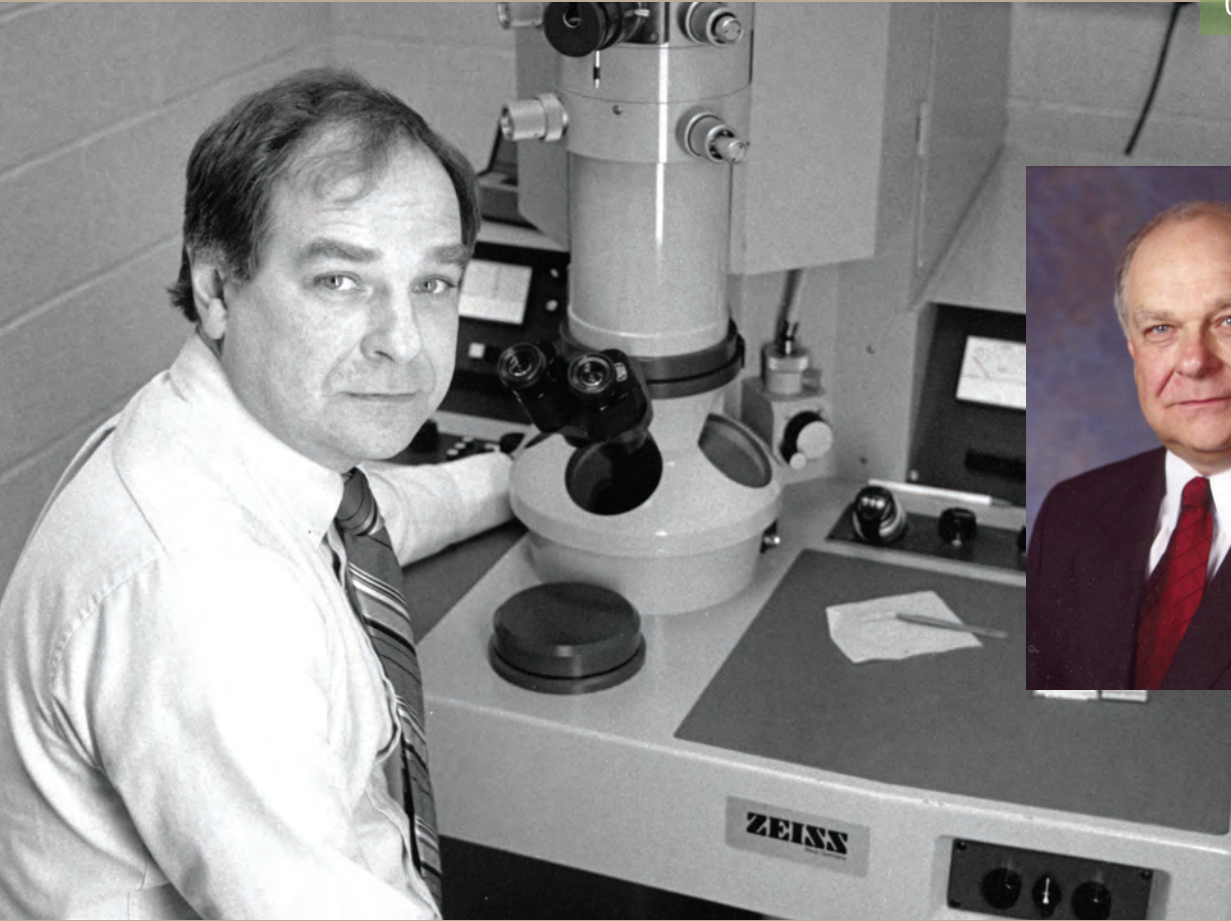
- “Developmental Pattern of Wrist Elements in Palaeognaths and Its Bearing on the Evolution of Theropod Carpals,” *Journal of Vertebrate Paleontology*, 27 (supplement), 2007: 81A.
- “A Revision of the Manual Morphology of *Compsognathus longipes* and Its Bearing on the Diagnosis of Compsognathidae” (with J.A. Gauthier), *Zoological Journal of the Linnean Society*, 149, 2007: 569–581.
- “Developmental Pattern of Wrist Elements in Palaeognaths and Its Bearing on the Evolution of Theropod Carpals,” Platform Presentation at Society of Vertebrate Paleontology 67th Annual Meeting, October 2007.

Deborah L. Goodwin

Assistant Professor, Religion

- “Take Hold of the Robe of a Jew: Herbert of Bosham’s Christian Hebraism,” Brill Academic Publishers, 2006.
- “In the Face of the Other: Postcolonial Theory and Christian

CAREERS OF SERVICE



Supplied photo (left) and file photo (far left)

Bill Heidcamp in the early '90s with the College's then-new electron microscope, and shown today.

Bill Heidcamp

Gustavus faculty member 1973–2008

"I have a passion for cancer research," said Bill Heidcamp, explaining the motivation that connected him to Gustavus for 35 years, teaching and conducting research with students on cell biology, comparative physiology, developmental biology, image analysis, melanoma metastasis, and more. Teaching at Gustavus, and at other institutions around the United States and the world, Heidcamp has focused on efforts to prevent the spread of melanoma, a serious condition that accounts for some 80 percent of skin cancer deaths.

Heidcamp has put aside his teaching and scientific research for the time being. Last year, at the invitation of former Gustavus Dean and VPAA John Mosbo, he accepted the position of dean of the College of Arts and Sciences at the American

University of Sharjah, located in the United Arab Emirates near Dubai. Founded in 1997 by His Highness Sheikh Dr. Sultan Bin Mohammed Al Qassimi, ruler of Sharjah, the University enjoys a state-of-the-art campus, cutting-edge programs, and a particular emphasis on the sciences.

"English is the language used on campus, and that helps, although I am working on my Arabic," said Heidcamp, who oversees the programs in the College of Arts and Sciences (CAS). Among his varied tasks, he helps develop new academic programs, recruits faculty for the Arts and Sciences, and works to expand the number of students pursuing majors in CAS.

Reached during a spring snow at Gustavus, Heidcamp reported Dubai was sunny and 80 degrees, normal for this time of the year. For most of the

"Teaching at Gustavus, and at other institutions around the United States and the world, Heidcamp has focused on efforts to prevent the spread of melanoma."

summer, when the UAE temperature spikes, the Heidcamps will be back to cooler St. Peter. He looks forward to coming home for a while, and he and his wife are eager to catch up with Gustavus friends. About the College, Heidcamp affirmed, "My heart is always there, no matter what."



Deborah Goodwin (Assistant Professor, Religion), author of "Take Hold of the Robe of a Jew": Herbert of Bosham's Christian Hebraism (2006), an examination of twelfth-century Psalms commentary that elucidates the complex situations that contributed to Christians' divergent perspectives on the Jews.

Identity Formation," International Congress on Medieval Studies, May 2007.

- "Theory and Historical Theology: A Test Case from the Medieval Jewish-Christian Encounter," Boston Colloquy in Historical Theology, August 2006.
- "Reading the Jews in a Christian Community: Problems in Literal and Figurative Identity," International Medieval Congress, July 2006.
- Elected, President, Society for the Study of the Bible in the Middle Ages, 2006-2007.

Jon Grinnell

Associate Professor, Biology, Francis Morey Uhler Chair in Biology

- "Do Acoustic Features of Lion, *Panthera leo*, Roars Reflect Sex and Male Condition?" (with D. Pfefferle,

P.M. West, C. Packer, and J. Fischer), *Journal of the Acoustical Society of America*, 121.6, 2007: 3947-3953.

- Appointed, International Editorial Board for *African Journal of Ecology*.

Max Hailperin

Professor, Mathematics and Computer Science

- *Operating Systems and Middleware: Supporting Controlled Interaction*, Course Technology, 2006.
- Review: "The Best of Verity Stob Highlights of Verity Stob's Famous Columns from EXE, Dr. Dobb's Journal, and The Register," *Computing Reviews*, October 2006.

Lisa Heldke

Professor, Philosophy, Raymond and Florence Sponberg Chair in Ethics

- *The Atkins Diet and Philosophy* (with C. Pineo and K. Mommer), 14, Philosophy and Popular Culture series, Open Court, 2006.
- "Let's Cook Thai: Recipes for Colonialism," eds. Carole Counihan and Penny van Esterik, *Food and Culture: A Reader*, 2nd ed., Routledge, 2007: 327-341.
- "The Unexamined Meal Is Not Worth Eating: Or, Why and How Philosophers (Might/Could/Do) Study Food," *Food, Culture and Society*, 9.2, 2006: 201-220.
- "Dear Kate Bornstein," *Radical Philosophy Association Proceedings*, 3, 2006: 95-103.
- "Just Food" (with P. O'Connor), eds. Brian T. Johnson and Carolyn R.

O'Grady, *The Spirit of Service: Integrating Service Learning, Spirituality, and Social Justice*, Anker, 2006: 125–142.

- "Feminism and Pragmatism," ed. Thomson and Gale, *Encyclopedia of Philosophy*, 2nd ed., 2006: 566–568.
- "Cultural Imperialism," *The Business of Food: Encyclopedia of the Food and Drink Industries*, Greenwood, 2007: 114–117.
- Review: "Understanding Eating Disorders, Simona Giordano," *Notre Dame Philosophical Reviews*, 2006: <http://ndpr.nd.edu/review.cfm?id=7444>.*
- "Mussel Bound," Uncommon Ground Café, Chicago, December 2007.
- "Just Food or Just Food?" Conference on Changing the World One Bite at a Time, November 2007.
- "Three Social Paradigms: Charity, Rights and Co-responsibility," Association for the Study of Food and Society, June 2007.
- "Jane Addams and Liberty Hyde Bailey: Two Models of Democratic Inquiry Community," *Feminist Epistemology, Metaphysics, Methodology and Science Studies*, February 2007.
- "Radical Listening: A Preliminary Investigation," *Radical Philosophy Association*, November 2006.
- "Neither/Nor: Mestiza, Transgender, and Bisexual Feminist Theories," *Society for the Advancement of American Philosophy Summer Institute*, July 2006.
- "Beyond Cosmopolitanism and Localism," *Association for the Study of Food and Society*, June 2006.
- "Newcomers Need Not Apply: A Racialized Reading of Wendell Berry," *International Society for Environmental Ethics/Central Division American Philosophical Association Convention*, April 2006.
- "Old McDonald Had a Wife: The Centrality of Marriage and Family in Wendell Berry's Agrarian Vision," *Society for the Advancement of American Philosophy*, Spring 2006.

- "Good Food: An Anthology," Gustavus Adolphus College Research, Scholarship, and Creativity Grant, 2006, \$2,000.
- Elected, Committee on Teaching Philosophy, American Philosophical Association.
- Elected, President of the Board, Higher Education Consortium for Urban Affairs.

Dennis C. Henry

Professor, Physics

- "How Humping Works", *Encyclopedia of North American Railroads*, Indiana University Press, 2007: 287–291.
- Review: "Minneapolis and the Age of Railway," *The Lexington Quarterly*, September 2006: 13–14.
- Appointed, Editorial Review Board, Northern Pacific Railway Historical Association, 1999–2006.

John Holte

Professor, Mathematics and Computer Science

- "Fractal Dimension of the Arithmetical Structure of Generalized Binomial Coefficients Modulo a Prime," *The Fibonacci Quarterly*, 48.1, 2006: 46–58.
- "The Pascal Fractal at the Other End of the Rainbow," *North Central Section of the Mathematical Association of America*, April 2006.
- "Discrete Multifractals," *International Congress of Mathematicians*, August 2006.
- Appointed, Committee on Undergraduate Student Activities and Chapters of the Mathematical Association of America, 2003–2006.
- Appointed, Editor of *Chapter News*. The Newsletter for Advisors of Student Chapters of the Mathematical Association of America, 2003–2006.

Yurie Hong

Assistant Professor, Classics

- "Reproductive Retribution: Cyrus's Death and a Mother's Revenge in Herodotus' Histories," *Classical Association of the Middle West and South*, April 2007.
- "Gendered Voices and the Production of Culture in Ch'unhyang and the Odyssey," *Pacific Ancient and Modern Language Association*, November 2007.
- "Staius' 'Lying Bodies' and the Dynamics of Authority in Silvae 4.6," *Classical Association of the Pacific Northwest*, March 2006.
- "Reading Art: Staius' 'Lying Bodies' and the Dynamics of Authority in Silvae 4.6," *Classical Association of the Middle West and South*, April 2006.
- Dissertation Fellowship, Simpson Center for the Humanities, University of Washington, 2006.

Amihan Huesmann

Visiting Assistant Professor, Physics

- "A Seasonal Climatology of Rossby Wave Breaking in The 320–2000-K Layer" (with M.H. Hitchman), *Journal of the Atmospheric Sciences*, 64, 2007: 1922–1940.

Douglas Huff

Professor, Philosophy

- Staged Reading, *Emil's Enemies*, Oxford University, January 2006.
- Staged Reading, *Jean Paul Savage and The Reichenbach Fall*, Bangalore Little Theatre, October 2007.
- "Emil's Enemies and the Nature of Historical Drama," *Harris Manchester College*, January 2006.
- "Wittgenstein and the Mystery of Consciousness," *Indian Society for Philosophy and Religion*, August 2006.
- "Kierkegaard and the Existentialist Movement," *Philosophy for Life Conference*, Suvidya College, October 2007.

- "The Nature of Religious Belief," Banaras Hindu University, November 2007.

Michael Hvidsten

Professor, Mathematics and Computer Science

- "Electronic Homework Systems" (with B. Yoshiwara), Joint Meetings of the American Mathematical Society and the Mathematical Association of America, January 2006.
- "Concrete Abstractions: A Project Approach to Teaching College Geometry," International Conference on Technology in Collegiate Mathematics, March 2006.
- "Electronic Student Assessment Systems" (with B. Yoshiwara), Joint Meetings of the American Mathematical Society and the Mathematical Association of America, January 2007.
- "Creating Truly Interactive Web Pages for the Exploration of Mathematical Ideas," International Conference on Technology in Collegiate Mathematics, March 2007.
- "Rodrigues Robotic Rotations," Mathematical Association of America-North Central Section Meeting, April 2007.
- "Creating Truly Interactive Web Pages for Exploring Geometry," Minnesota Council of Teachers of Mathematics Meeting, April 2007.
- Appointed, Mathematical Association of America Committee on Technology in Mathematical Education, 2003-2008.
- Appointed, Coordinator of the Mathematical Association of America Section NeXT Faculty Development Program, Mathematical Association of America - North Central Section, 2005-2008.

Jeff A. Jenson

Assistant Professor, Library

- "Genealogy Software: An Introduction," South Central Minnesota Genealogy Expo, November 2007.

Jeff Jeremiason

Assistant Professor, Chemistry and Environmental Studies

- "Sulfate Addition Increases Methylmercury Production in an Experimental Wetland" (with D.R. Engstrom, E.B. Swain, E.A. Nater, B.M. Johnson, J.E. Almendinger, B.A. Monson, and R.K. Kolka), *Environmental Science and Technology*, 40, 2006: 3801-3806.
- "Mercury in Soils, Water, and Fish in Voyageurs National Park (Minnesota): Importance of Atmospheric Deposition and Ecosystem Factors" (with J.G. Wiener, B.C. Knights, M.B. Sandheinrich, M.E. Brigham, D.R. Engstrom, L.G. Woodruff, W.F. Cannon, and S.J. Balogh), *Environmental Science and Technology*, 40, 2006: 6261-6268.
- "Changes in Mercury Methylation in a Boreal Wetland Previously Enriched in Sulfate: Synergistic Effects of Atmospheric Deposition and Water-level Fluctuations," *Great Lakes Air Deposition Program*, 2007, \$5,427.
- Appointed, International Mercury Conference 2006 Regional Planning Committee.

Darrell Jodock

Professor, Religion, Drell and Adeline Bernhardson Distinguished Professor in Lutheran Studies

- "Context, Continuity, and Discontinuity in Hans Schwarz's Survey of Nineteenth- and Twentieth-Century Theology," *Scottish Journal of Theology*, 60.3, 2007: 360-370.
- Interview: *Down and Out: Where Grace Takes You* (with R. Bliese, M. Kolden, L. Malcolm, V. Nelson, and R. Martinson), Luther Productions, 2007.
- Interview: *Luther's Legacy for Laity*

(with T. Wengert, D. Lose, and K. Kleinhans), SELECT Multimedia Resources, 2007.

- "Lutheranism and Judaism," Hebrew Union College, January 2006.
- "Other Themes in Luther," Northwest Wisconsin Synod Lay School of Theology, February 2006.
- "Luther and the Jews: From Diatribe to Dialogue," Luther Seminary, April 2006.
- "The Lutheran Tradition and Higher Education," Thrivent Associates Workshop, June 2006.
- "The Theological Foundation of Vocation," "Vocation," and "Vocation and Religious Diversity," Concordia College, Moorhead, Minn., August 2006.
- "The Theological Foundation of Vocation," "Vocation," and "Vocation and Religious Diversity," Concordia College, Bronxville, N.Y., August 2006.
- "The Varied Jewish World of the First Century," Northwest Synod of Wisconsin Lay School of Theology, October 2006.
- "Context, Continuity, and Discontinuity in Hans Schwarz's Survey of 19th- and 20th-Century Theology," Annual Meeting of the American Academy of Religion, November 2006.
- "The Gift of Two Testaments: A Deeper View of God and God's Purpose," Symposium on "One God, Two Testaments" at Shepherd of the Valley Lutheran Church, March 2007.
- "The Distinctiveness of Lutheran Colleges," Lutheran College Alumni Directors Conference, June 2007.
- "The End of the World: A (Mainline) Christian View," Adath Jeshurun Congregation/Synagogue, July 2007.
- "Albrecht Ritschl's Portrait of the New Testament and the Early Church," Annual Meeting of the American Academy of Religion, November 2007.
- Member, Steering Committee, Association of Teaching Theologians of the ELCA, 2006-2007, Chair, January-August 2006.
- Chair, Planning Committee, Convocation of Teaching Theologians, August 2007.

- Vice Chair, Board of the Collegetown Institute for Ecumenical and Cultural Research, 2006–2007.
- Member, Board of the Dovre Center for Faith and Learning, Concordia College, Moorhead, Minn., 2007.
- Chair, Consultative Panel on Lutheran-Jewish Relations, ELCA, 2006–2007.

Sarah E. Johnson

Assistant Professor, Religion

- “Lord, Send Us: A Kaleidoscope of Evangelists,” *Christian History and Biography*, 90, 2006: 35–38.
- Review: “Citizen: Jane Addams and the Struggle for Democracy,” *Christian Century*, May 2006: 40–41.
- “The Three Gifts of Richard Heitzenrater,” *American Society of Church History*, January 2008.
- “Is the Good Missionary Bad for Missions? Missionary Representations in Popular Novels,” Southeastern Regional Meeting of the American Academy of Religion, March 2006.

Michael Jorgensen

Professor, Music

- VocalEssence Ensemble Singers, *The World Beloved: A Bluegrass Mass* by Carol Barnett and Marisha Chamberlain, Clarion Records, 2007.
- VocalEssence Ensemble Singers, *The Songs We Sang—Favorite American Folksongs*, Clarion Records, 2007.
- Bass soloist, *Messiah*, Paramount Festival Chorus, Paramount Theatre, St. Cloud, Minn., December 2007.
- Bass soloist, *Stabat Mater*, Cathedral of St. Mary of the Immaculate Conception, Peoria, Ill., November 2007.
- Bass soloist, Voice Faculty Recital, Gustavus Adolphus College, November 2007.
- Bass Soloist and VocalEssence Ensemble Singers, *The Most Happy Fella*, Ted Mann Concert Hall, Minneapolis, October 2007.
- VocalEssence Ensemble Singers, American Masterpieces Tour, Calvin

College Fine Arts Center, Grand Rapids, Mich., October 2007.

- VocalEssence Ensemble Singers, *Songs of Innocence and of Experience*, Orchestra Hall, Minneapolis, April 2007.
- Bass soloist, *Liebeslieder-Walzer*, Concordia University, St. Paul, March 2007.
- VocalEssence Ensemble Singers, *Spanish Inspiration*, Basilica of St. Mary, Minneapolis, March 2007.
- Bass soloist, *Stabat Mater*, Westminster Presbyterian Church Choir and Minnetonka Choral Society, Hopkins High School, Minnetonka, and Westminster Presbyterian Church, Minneapolis, March–April 2007.
- VocalEssence Ensemble Singers, *Witness*, Ordway Center for the Performing Arts, February 2007.
- Bass soloist (The Mikado), *The Mikado* (concert version), St. Peter Choral Society, St. Peter, February 2007.
- VocalEssence Ensemble Singers, *Bluegrass Harmonies*, Trinity Lutheran Church, Stillwater and Ted Mann Concert Hall, Minneapolis, January 2007.
- VocalEssence Ensemble Singers, *Welcome Christmas!* Plymouth Congregational Church, Minneapolis, St. Andrew’s Lutheran Church, Mahtomedi, and Normandale Lutheran Church, Edina, December 2006.
- Bass soloist, *Messiah*, Paramount Festival Chorus, Paramount Theatre, St. Cloud, Minn., December 2006.
- VocalEssence Ensemble Singers, *ACDA Regional Concert*, St. Andrew’s Lutheran Church, Mahtomedi, November 2006.
- Bass soloist and VocalEssence Ensemble Singers, *Ghost Stories and Songs with Garrison Keillor*, Orchestra Hall, Minneapolis, October 2006.
- VocalEssence Ensemble Singers, *American Voices*, Orchestra Hall, Minneapolis, October 2006.
- Bass soloist, Minnesota Valley Sommerfest, St. Peter, July 2006.
- Narrator, *The Soldier’s Tale*, Minnesota Valley Sommerfest, St. Peter, July 2006.

- VocalEssence Ensemble Singers and bass duet soloist, *Israel in Egypt*, St. Paul Chamber Orchestra, Ordway Center, St. Paul, April 2006.
- Baritone soloist, *The Passion of Jesus of Nazareth*, St. Olaf Catholic Church, Minneapolis, March 2006.

María Isabel Kalbermatten

Assistant Professor, Modern Languages, Literatures, and Cultures

- “La ironía verbal como una categoría prototípica en español: un análisis discursivo,” III Congreso Internacional de Lingüística Hispánica Jóvenes Investigadores en Lenguas y Lingüística, October 2007.
- “Yo nunca fui irónico y no lo volveré a ser. La incompatibilidad o incongruencia entre dos interpretaciones simultáneas como generadora del humor en la ironía verbal,” Conference on Spanish and Portuguese Dialogue Studies, April 2007.
- “La ironía y la parodia verbal como formas de humor conversacional,” X Congress of International Society for Luso-Hispanic Humor Studies, October 2006.
- Elected Member of the Executive Committee of the International Society for Luso-Hispanic Humor Studies.

Patricia A. Kazarow

Professor, Music

- “Vocal Pedagogy in the Choral Rehearsal,” ed. Lorraine Brugh, *Church Music Electronic Board*, Valparaíso University, August 2007: 1–47.
- Hymnody Editorial Team, *Evangelical Lutheran Worship*, Augsburg Fortress, October 2006.
- Conductor and Musical Director, “Messiah: Selections from Handel’s Most Famous Oratorio,” Prairie Arts Chorale; Fulda, Redwood Falls, Marshall, Clara City, and Spicer, Minn., November 2007.

- Conductor and Musical Director, "See the USA . . . an American Soundscape," Prairie Arts Chorale; Prinsburg, Appleton, Marshall, and Redwood Falls, Minn., May 2007.
- Conductor and Musical Director, "Mozart! A 250th Birthday Celebration," Prairie Arts Chorale; Fulda, Springfield, Montevideo, Redwood Falls, and Spicer, Minn., November 2006.
- Conductor and Musical Director, "All That Jazz," Prairie Arts Chorale; Redwood Falls, Montevideo, Marshall, Jackson, and Springfield, Minn., May 2006.
- Choral clinician and/or vocal adjudicator, Austin, Lewiston, Mankato, Minneapolis, New Ulm, Owatonna, Prior Lake, and Jackson, Minn., 2006–2007.
- Southwest Minnesota Arts and Humanities Council, the Prairie Arts Chorale, Fall 2007, \$3,000.
- Minnesota Voices, National Endowment for the Arts, Prairie Arts Chorale and Minnesota Valley Chorale, Summer, May 2007, \$4,000.
- Southwest Minnesota Arts and Humanities Council, the Prairie Arts Chorale, Spring 2007, \$2,500; Fall 2006, \$3,000; Spring 2006, \$3,811.
- Appointed: Renewing Worship Hymnody Editorial Team, Evangelical Lutheran Church in America.

Brenda Kelly

Assistant Professor, Biology and Chemistry

- "Curriculum Development in the Biochemistry Teaching Laboratory," Hope College, November 2006.
- "The Search for Inhibitors for E. coli gamma-glutamylcysteine Synthetase," St. Olaf College, March 2006.
- "Identification of an Allosteric Binding Site in Gamma-Glutamylcysteine Ligase" (with K. Rozenboom '08 and C. Boettcher '09), Undergraduate Research in the Molecular Science Annual Meeting, October 2007.
- "Identification of Inhibitors of E. coli

Gamma-Glutamylcysteine Synthetase" (with K. Rozenboom '08), Greater Gustavus Fund Student-Faculty Collaborative Research, 2007, \$3,500.

Pamela Kittelson

Associate Professor, Biology

- "Adding Nitrogen Controls Invasive Yellow Sweetclover, *Melilotus Officinalis*, in Common Garden Study" (with J. Eckberg '04 and E. Bockman '04), *Ecological Restoration*, 25.4, 2007: 279–281.
- "Genetic Diversity in Isolated Patches of the Tallgrass Prairie Forb, *Lithospermum Canescens*" (with S. Handler '04), *Journal of the Torrey Botanical Society*, 133.4, 2006: 513–518.
- "Native Mycorrhizal Interactions May be Affected by Invasive Species" (with D. Mummey and M. Rillig), National Science Foundation Outreach, University of Montana and the City of Missoula, July 2006.
- "Patterns of Phloem Transport Affect Ecological Interactions," University of Montana, April 2006.
- "Kenan Fellowship for College Professors; Infusing Botany into a General Biology Curriculum," National Tropical Botanical Garden, 2007, \$2,000.
- "Assessing Impact of Invasive Species on Native Physiological Traits" (with J. Maron and C. Pinahs '05), National Science Foundation Research Opportunity Award, 2006, \$19,000.

Michele Hollingsworth Koomen

Assistant Professor, Education

- "Listening to Their Voices: What are They Telling Us About Their Experiences in Learning through Inquiry in Science?" National Association for Research in Science Teaching, April 2007.
- "The Essence of the Experience of Special Education and Regular Education Seventh Grade Students as They Learn Insect Biology and

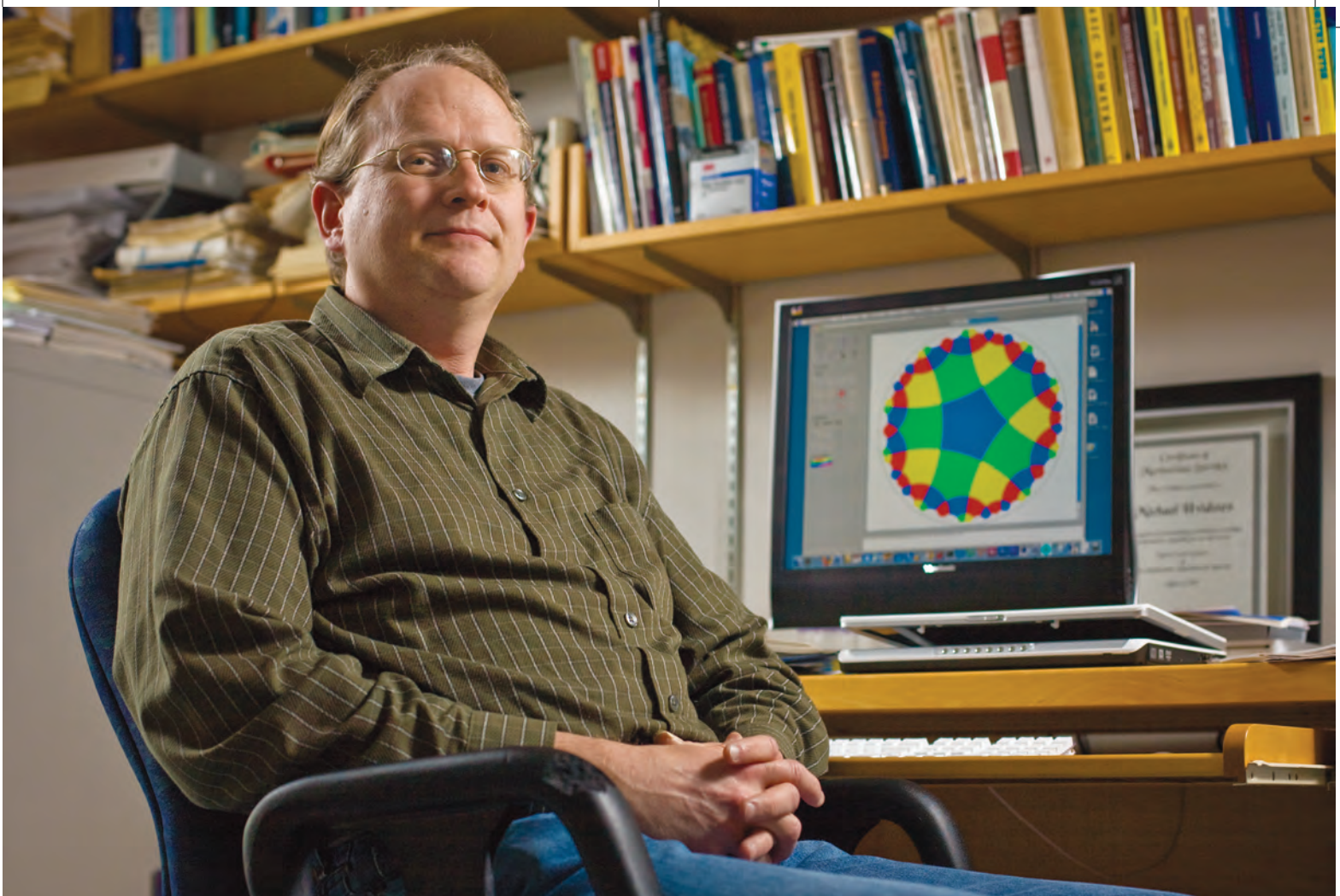
Ecology," Association of Science Teacher Education, January 2007.

- "Student Teaching at Wolf Ridge ELC: Collaborative Effort of Gustavus Adolphus College Department of Education and Wolf Ridge Environmental Learning Center," North American Association for Environmental Education, October 2006.
- "Longitudinal Study of Beginning Teachers: Emerging Themes," Association of Science Teacher Education, January 2006.
- "Monarch and More: Insect Ecology for Elementary" (with K. Oberhauser), Minnesota Office of Higher Education, Improving Teacher Quality, \$46,560.
- "Listening to the voices of immigrant children," Gustavus Adolphus College Research, Scholarship, and Creativity Grant, 2007, \$2,200.
- Elected, Chair of Inclusion Forum Association for Science Teacher Education.

Mark G. Kruger

Professor, Psychology

- "Brass and Woodwind Student Practice Habits in Norway, Japan, and the United States" (with M. Lammers), *National Association of Wind and Percussion Instructors Journal*, 54.4, Summer 2006: 4–13.
- Review: "Musical Communication" (with M. Lammers), *Psychology of Music*, 35.1, 2006: 177–179.
- "A Comparative Study of Air Support in the Trumpet, Horn, Trombone, and Tuba" (with J. Kruger, and J. McClean), 9th International Conference on Music Perception and Cognition, August 2006.
- "Airflow and Intra-oral Pressure in Brass Performance" (with J. Kruger and J. McClean), 95th Semi-Annual Symposium of the New York State Section of the American Physical Society, October 2006.
- "Language Use in Autobiographical Memory For Musical Experiences" (with M. Lammers), *Proceedings of the*



Mike Hvidsten (Professor, Mathematics and Computer Science), recipient of the Gustavus Faculty Scholarly Accomplishment Award in 2005, with research interests in minimal surface, computer graphics and scientific visualization, and mathematical software development.

9th International Conference on Music Perception and Cognition, August 2006.

- "Do Gender and Co-Rumination Style Influence Responses to Advice from Friends?" (with D. Martin), Annual Meeting of the Association for Psychological Science, May 2007.
- "Gender Differences in Co-Rumination Depend Upon Relationship Type," Annual Meeting of the Association for Psychological Science, May 2006.

John M. Lammert

Associate Professor, Biology

- *Techniques in Microbiology: A Student Handbook*, 1st ed., Pearson/Benjamin Cummings, October 2006.

Karl L. Larson

Assistant Professor, Health and Exercise Science

- *Fit To Be Well* (with A. Thygeson), Boston: Jones and Bartlett, 2006.
- "Interpreting the Causes of Personal Stress with 'Cheese,'" *American Journal of School Health*, 78.3, 2007.
- "Analyzing the Impact of Drugs, Violence, and Sex in the Media," *American Journal of Health Education*, 38.3, 2007: 169–171.
- "Assessing the Perceived Development of Skill and Knowledge, Value, and Interest in Continued Participation After Required Physical Activity Courses with College Students," (with G.B. Bower and J. Kamla), *Indiana Health, Physical Education, Recreation, and Dance Journal*, 35.3, 2006: 31–35.
- "The Art of Motivation: The Social-Cognitive Approach to Motivation in Physical Education" (with J. Kamla and

J. Davis-Brezette.), *Strategies*, 19.5, 2006: 17–20.

- "Hockbaum, Kohlberg, and College Student Health Behavior," Central District American Alliance for Health, Physical Education, Recreation, and Dance, April 2007.
- "Skill Development, Course Value, Continued Participation after Required Activity Course Completion," American Alliance for Health, Physical Education, Recreation, and Dance, March 2006.
- "Assessing College Student Experiences in Mandatory Physical Education Classes," American Alliance for Health, Physical Education, Recreation, and Dance, April 2006.
- Alcohol Awareness Grant (with J. Douglas and K. Eckhart), National Collegiate Athletic Association, 2007–2010, \$30,000.
- Adviser, American Association for Health Education.



Pamela Kittelson (Associate Professor, Biology), recipient of a National Science Foundation Research Opportunity Award, to support her work on assessing the impact of invasive species on physiological traits of native grassland species across a gradient of diversity.

- Chair, American Association for Health Education, Undergraduate Case Study Competition, Student Involvement Committee 2004–2007.
- Chair, Central District American Alliance for Health, Physical Education, Recreation, and Dance.
- Chair, Community Health Section, Minnesota-American Alliance for Health, Physical Education, Recreation, and Dance, 2006–2009.

Martin J. Lang

*Visiting Assistant Professor,
Communication Studies*

- “Staying in Bounds: Sports Magazines and the Policing of Gender Roles,” National Communication Association Convention, November 2007.

Baker Lawley

Assistant Professor, English

- “Fenced,” Fiction Reading, Carol Connolly Reading Series, Banfill-Locke Center for the Arts, July 2007.
- “The Good Lesson of Bad Writing,” Associated Writing Programs Conference, March 2007.
- “Teaching Description: A Nontraditional Multimedia Approach,” Associated Writing Programs Conference, March 2006.
- “The Free State of Winston,” Gustavus Adolphus College, Research, Scholarship, and Creativity Grant, 2007, \$1,890.
- “Haints,” Emerging Writer Grant, Jerome Foundation/Intermedia Arts, \$2,000.

Jill Locke

Associate Professor, Political Science

- “Shame and the Future of Feminism,” *Hypatia*, 22.4, 2007: 146–162.
- “Between Therapy and Tragedy: Democratic Citizenship and the Politics of Shame,” Murphy Institute Center for Ethics and Public Affairs, Tulane University, October 2006.
- “Unraveling Tocqueville’s America: Marital Virtue and the Affairs of Andrew Jackson,” Western Political Science Association Annual Convention, March 2006.
- Faculty Fellowship, Murphy Institute Center for Ethics and Public Affairs, Tulane University, 2006–07, \$45,000.
- Appointed, Feminist Theory Conference Co-coordinator (with H. Sparks), Western Political Science Association, 2007.

Thomas LoFaro

Associate Professor, Mathematics and Computer Science

- "Population Models of Genomic Imprinting. II. Maternal and Fertility Selection" (with H.G. Spencer and T. Dorn), *Genetics*, 173, 2006: 2391-2398.

Kristen Lowe

Assistant Professor, Art and Art History

- "Summer Salon," Anderson Center for Interdisciplinary Studies, Red Wing, Minn., 2006.
- "Faculty Exhibition," Minnetonka Art Center, Minnetonka, Minn., Summer 2006.
- "Everything under the Sun, Sustainable Design," Minneapolis College of Art and Design, Minneapolis, Fall 2006.
- "Drawing the Line" (with M. Kareken), St. Mary's University, Winona, Minn., Spring 2007.
- "Drawings Midwest," Southern Missouri State University, Spring 2007.
- "Samples from the Studio," Arts Center of Saint Peter, St. Peter, Minn., Winter 2007.
- "Recent Work: Drawing, Kristen Lowe," Metropolitan State University, St Paul, Minn., Spring 2007.
- "Drawings Midwest," *Springfield Business Journal*, Springfield, Mo., Spring 2007.
- Research, Scholarship, and Creativity Grant, Minneapolis College of Art and Design, Minneapolis, 2006, \$750.

Mariangela Maguire

Associate Professor, Communication Studies

- "Promoting Essential Learning Outcomes in General Education Courses" (with T. Laird and E. Regosin), American Association of Colleges and Universities Annual Meeting, January 2007.
- "Can Value-Added Assessment Improve Liberal Arts Education?"

- (with M. Selmon, J. McNew, J. Abernathy, B. Craft, and R. Miller), American Conference of Academic Deans, American Association of Colleges and Universities Annual Meeting, January 2006.
- "Liberal Arts Colleges and the Spelling Commission: *Carpe Diem*" (with L. Behling), *Liberal Arts Online*, 6.10, November 2006: http://liberalarts.wabash.edu/cila/home.cfm?news_id=4079.

John P. Mattson

Associate Professor, Health and Exercise Science

- "Maximal Force is Unaffected by Emphysema-Induced Atrophy in Extensor Digitorum Longus Muscle" (with D.C. Poole, S.A. Hahn, T.I. Musch, R.T. Hinkle, and R.J. Isfort), *Medicine and Science in Sports and Exercise*, 39.6, 2007: 39.
- "Emphysema-Induced Reductions in Diaphragm Mass," (with R.T. Hinkle, R.J. Isfort, L.F. Ferreira, T.I. Musch, and D.C. Poole), American College of Sports Medicine, Integrative Physiology of Exercise Meeting, 2006.
- "Myosin Heavy Chain Expression in the Right Ventricles of Hamsters with Emphysema," Gustavus Adolphus College Research, Scholarship, and Creativity Grant, 2007, \$2,200.
- "Prevention of Skeletal Muscle Wasting Associated with Chronic Obstructive Pulmonary Disease," Proctor and Gamble, 2005-2007, \$178,000.

Steve Mellema

Professor, Physics

- "Superstrings: A Theory of Everything for Everyone?" American Association of Physics Teachers Summer Meeting, July 2007.

Daniel C. Moos

Assistant Professor, Education

- "The Role of Goal Structure in Undergraduates' Use of Self-Regulatory Variables in Two Hypermedia Learning Tasks" (with R. Azevedo), *Journal of Educational Multimedia and Hypermedia*, 15.1, 2006: 49-86.
- "Using Computers as Metacognitive Tools to Foster Students' Self-Regulated Learning" (with R. Azevedo, J.C. Cromley, F.I. Winters, and J.A. Greene), *Technology, Instruction, Cognition, and Learning Journal*, 3, 2006: 97-104.

Chuck Niederriter

Professor, Physics

- "Energy Storage Systems for Peak Shaving as a Complement to Wind Power at Gustavus Adolphus College" (with J. Sieling '08 and D. Berg '08), American Association of Physics Teachers Conference, January 2007.
- "Energy Storage Systems for Peak Shaving as a Complement to Wind Power at Gustavus Adolphus College" (with J. Sieling '08 and D. Berg '08), Minnesota Area Association of Physics Teachers Conference, April 2007.
- "Energy Storage as a Partner to Wind Energy Production" (with J. Sieling '08), Gustavus Adolphus College Presidential Faculty-Student Collaboration Grant, 2006-07, \$7,500.
- Elected, Minnesota Section Representative of the American Association of Physics Teachers.
- Elected, Officer in the Minnesota Area Association of Physics Teachers.

Amanda Nienow

Assistant Professor, Chemistry

- "Chemical Vapor Deposition of Zirconium Oxide on Aerosolized Silicon Nanoparticles" (with J.T. Roberts), *Chemical Materials*, 18.23, 2006: 5571-5577.
- "Photochemical Degradation of Emerging Agrochemicals," Research Site for Educators in Chemistry, 2006, \$19,272.

Douglas Nimmo

Professor, Music

- Conductor, The Gustavus Sommarfest Wind Orchestra Final Concert, Gustavus Adolphus College, July 2006.
- Guest Conductor, Tri-Metro Conference Fine Arts Festival, Saint Croix, The TMC Festival Band, Minnesota, April 2007.

Byron Nordstrom

Professor, History and Scandinavian Studies

- "Dead Uncertainties: Swedish Americans Teaching and Writing History," *The Swedish-American Historical Quarterly*, 57.4, 2006: 218-236.
- "Editor's Corner," *The Swedish-American Historical Quarterly*, 57.3, 2006: 139-150.
- "Editor's Corner," *The Swedish-American Historical Quarterly*, 57.2, 2006: 75-80.
- "Editor's Corner," *The Swedish-American Historical Quarterly*, 57.1, 2006: 3-6.
- "Norwegians and Swedes in Willmar, Minnesota, c.1905," Norwegians and Swedes: Neighbors and Friends Conference, October 2007.
- Editor, *The Swedish-American Historical Quarterly*, 1997-2008.
- Fellowships and Grants Review Committee, American-Scandinavian Foundation, 2005-2008.
- Fellowships and Grants Reviewer, American Council of Learned Societies, 2006 and 2007.

- President, Society of Historians of Scandinavia, 2005-2007.
- Executive Committee Member as Past President, Society of Historians of Scandinavia, 2007.
- Advisory Board, The Swenson Swedish Immigration Research Center, Augustana College, Rock Island, IL.

Peg O'Connor

Professor, Philosophy and Gender, Women, and Sexuality Studies

- "Just Food" (with L. Heldke), eds. Brian T. Johnson and Carolyn R. O'Grady, *The Spirit of Service: Integrating Service Learning, Spirituality, and Social Justice*, Anker, 2006: 125-142.
- "Swimming Against the Mainstream Gay and Lesbian Political Agenda," ed. Greg Moses, *Radical Philosophy Review*, Supplementary Volume, 2006: 79-85.
- Review: "Wittgenstein: A Feminist Interpretation," *Hypatia*, 21.3: 207-210.
- "Having and Knowing Our Obligations of Justice: A Wittgensteinian Approach," *Feminist Epistemologies, Methodologies, Metaphysics and Science Studies*, Society for Analytic Feminism at the American Philosophical Association, April 2007.
- "The Christian Right and the Reconstructionists: Eliminating the Separation between Church and State," *Radical Philosophy Association Biennial Conference*, November 2006.
- Elected, Steering Committee Member, *Feminist Ethics and Social Theory*.
- Elected, Committee Member, The American Philosophical Association's Committee on the Status of Gay, Lesbian, Bisexual, and Transgender Persons in the Profession.

Carolyn O'Grady

Professor, Education

- Co-Editor, *The Spirit of Service: Exploring Faith, Service, and Social Justice in Higher Education* (with B. T. Johnson), Anker, 2006.
- "Exploring Contemplative Practice and Integrative Learning in Higher Education," Gustavus Adolphus College Research, Scholarship, and Creativity Grant, 2007, \$2,100.
- Appointed, Minnesota Book Awards judge, Autobiography, Memoir & Creative Nonfiction Category, 2006.

Rick Orpen

Professor, Music

- Timpanist, St. Peter Chorale Society, *The Creation*, St. Peter, MN, March 2006.
- Bass Guitarist, Gustavus Faculty Jazz Quartet, Steve Wright Faculty Recital, Björling Recital Hall, Gustavus Adolphus College, March 2006.
- Percussionist, Sommerfest, "L'histoire," Björling Recital Hall, Gustavus Adolphus College, July 2006.
- Bass Guitarist, Patricia Snapp and Douglas Snapp Faculty Recital, Björling Recital Hall, Gustavus Adolphus College, September 2006.
- Timpanist, St. Peter Chorale Society, *The Mikado*, St. Peter, Minn., February 2007.
- Bass Guitarist, John Engebretson Faculty Recital, Björling Recital Hall, Gustavus Adolphus College, November 2007.
- Bass Guitarist, Charmin Michele Trio, *Jazz Standards*, 2006-2007.
- Bass Guitarist, Jim Whitman Trio, *Jazz Standards*, 2006-2007.
- Bass Guitarist, James McGuire Trio, *Jazz Standards*, 2006-2007.
- Bass Guitarist, Katy Young, *Jazz Sounds of the '20s and '30s*, 2006.
- Percussionist, Steve Wright Faculty Recital, *Tiesivorpimi II for Trumpet and Percussion*: I. "Going Fourth," II. "Third Dimension," III. "Scaling the Heights," Björling Recital Hall,



Greg Mason

Gustavus faculty member 1971–2008

“I was a war baby,” said Greg Mason as he retraced steps that led him, as a young Gustavus English professor who joined the faculty in 1971, to participate the College’s then-emerging Peace Studies program — one of the first such programs in the country. “My parents were evacuated from London and so I was born in a large country manor that had been requisitioned as a maternity hospital. World War II had a profound impact on my life; where I grew up there was food rationing until 1951.”

Under Mason’s leadership from 1985 to 2002, the co-curricular peace education program grew to become a curricular Peace Studies program while he taught and published globally on the topic. Gustavus’s annual May Day! Peace Conference has been a focal point, bringing the campus and community together to examine important social justice

issues. Many of these have been transformative for Mason; he particularly recalls commemorating the 150th anniversary of the Treaty of Traverse des Sioux in 2001, passing a peace pipe and building a sweat-lodge tepee on campus. “I nearly fainted from the heat in there,” Mason said. “It was a profound experience that brought us closely in touch with our area’s often invisible American Indians.”

Beyond peace studies, Mason’s interests are many. In 1972, he introduced Gustavus’s first formal film study course, called Film as Art, and has since taught courses in Literature and Film as well as Documentary Production. He’s made several films of his own, and his work has been broadcast on public

television and screened at St. Paul’s Landmark Center. Mason has strong expertise in world literature, is a keen student of languages, and is a “great believer in international education.” He led Gustavus January Term classes in England and Mexico and has taught, also, in Japan and Austria.

“The thing about Gustavus is the freedom it gives you to teach things that interest you,” Mason observed.

“ ‘The thing about Gustavus is the freedom it gives you to teach things that interest you.’ ”

“Here, you get all kinds of contacts with students, which I absolutely love. If teaching is your passion, this is the place for you.”

Gustavus Adolphus College, March 2006.

- Solo jazz guitarist, Faculty Artist Recital, Lutheran Summer Music Academy and Festival, "If Handel Then Sunshine," St. Peter, Minn., July 2006.
- Solo percussionist, Faculty Artist Recital, Lutheran Summer Music Academy and Festival, "Tiesivorpmi III for Solo Percussion," St. Peter, Minn., July 2007.
- Faculty Member, Lutheran Summer Music Academy and Festival, Gustavus Adolphus College, June–July 2006, 2007.
- Music Adjudicator, Minnesota State High School Solo and Ensemble Contest, Gustavus Adolphus College, April 2006, 2007.

Yumiko Oshima-Ryan

Associate Professor, Music

- "Not Always by Memory," *Clavier*, 45.9, November 2006: 21–33.
- Guest Artist, Lecture/Recital, Minnesota State University, Mankato, October 2007.
- Faculty Piano Recital, Gustavus Adolphus College, September 2007.
- Concert Series Piano Recital, Tokyo Children's Library, June 2007.
- Guest Artist, Lecture/Recital, Ferris University, Yokohama, Japan, June 2007.
- "The Music of Japan: The Past into the Future" (solo and collaborative), with guest artists from Japan (voice and shakuhachi), Gustavus Adolphus College, October 2006.
- "Music from Japan" (solo and collaborative), Ferris University, Yokohama, Japan, June 2006.
- Concert Series, Chamber Music, Tokyo Children's Library, Tokyo, Japan, June 2006.
- "Tapiola Visions for Piano (left hand) by Takashi Yoshimatsu (b. 1953) – a glimpse of recent musical trends in Japan," The College Music Society, The Fiftieth National Conference, November 2007.

Jeffrey Owen

Visiting Assistant Professor, Economics and Management

- "The Intangible Benefits of Sports Teams: A Contingent Valuation Study," *Public Finance and Management* (e-journal), 6.3, 2006, http://www.spaef.com/PFM_PUB/.
- "Bread or Circus? The Ethics of Economic Impact Studies," eds. Jay Gatrell and Neil Reid, *Enterprising Worlds: A Geographic Perspective on Economics, Environments and Ethics*, Springer, September 2006: 2–27.
- "Cities and Professional Sports Teams: A Dynamic Bargaining Model" (with W. J. Polley), *International Journal of Sport Finance*, 2.1, February 2007: 10–24.
- "The Evolution of the IOC: A Study in Rent Seeking," Western Economic Association International Conference, July 2006.
- "Do Stadium Subsidies Help Teams Win?" (with W. J. Polley), Midwest Economic Association, March 2007.
- "Do Stadium Subsidies Help Teams Win?" (with W. J. Polley), Western Economic Association International Conference, July 2007.

Matthew Panciera

Assistant Professor, Classics

- "Alicaria in Plautus, Festus, and Pompeii," *Classical Quarterly*, May 2007: 303–306.
- "The Sexual Graffiti in the Brothel of Pompeii," *Congressus Internationalis Epigraphiae Graecae et Latinae*, September 2007.
- "Plautonic Amabo: When Men Say 'Please' in Plautus," American Philological Association's Annual Meeting, January 2007.
- Secretary, Classical Association of Minnesota, 2005–2009

Garrett Paul

Professor, Religion

- "The Carnal Knowledge of History. Practical Historical Theology and the Past and Future of Intimacy," eds. John Witte et al., *The Equal Regard Family and its Friendly Critics*, Eerdmans, 2007: 223–246.
- "Winners and Losers in a Critical History of Nineteen Century Philosophy of History, or, The Conditions of the Possibility of Writing History," Seminar on Lutheran History, November 2007.
- "The Ethics of Aging and Health Care," Danebod Folk School, August 2007.

Lois Peterson

Professor, Art and Art History

- "Listening at the Edge," *500 Tiles: An Inspiring Collection of International Work*, Lark Books, December 2007.
- "Journeys," Eau Claire Art Center, Eau Claire, Wis., 2007.

Debra Eckerman Pitton

Professor, Education

- *Mentoring Novice Teachers: Fostering a Dialogue Process*, 2nd Edition, Corwin Press, 2006.
- "Lit circles, collaboration and student interest," *Academic Exchange Quarterly*, 9.4, Winter, 2006: 87–90.
- "The bullying project: a service learning partnership," *Action in Teacher Education*, 28.3, 2007: 29–41.
- "Reconsidering the curriculum review cycle," *The Minnesota Report*, 24.1, Winter, 2007: 2, 4.
- "The Bullying Project: Service Learning as Teacher Education" (with N. Buhmann), Association of Teacher Education National Conference, February 2006.
- "Social Supports for Middle School Students: Keeping Them Engaged," Minnesota Association of Supervision and Curriculum Development Winter Conference, March 2006.
- "Service Learning as Instructional



Mark Kruger (Professor, Psychology), 2006 recipient of the Gustavus Faculty Scholarly Accomplishment Award, with research interests in the psychology of music and emotions.

Methodology – How to Make It Work!" (with N. Buhmann), Collaboration Fall Conference, November 2006.

- "The Bullying Project: Building Relationships through Advisory," Minnesota Middle School Association

Annual Conference, December 2006.

- "The Latino Academy – A Faculty Development Immersion Project" (with J. Clementson), Collaboration Winter Conference, February 2007.
- "Teacher Communication Skills: A New

Focus for Strengthening Classroom Management," National Middle School Association National Conference, November 2007.

- Appointed, State representative to the Association of Supervision and Curriculum Development, National Leadership Council.

Sujay Rao

Assistant Professor, History

- "Arbiters of Change: Provincial Elites and the Origins of Federalism in Argentina's Littoral, 1814–1820," North Central Council of Latin Americanists, October 2007.
- "Province and Nation in Argentina," National Endowment for the Humanities Summer Stipend, 2007, \$5,000.
- "Government in Argentina's Provinces in the 1820s," Gustavus Adolphus College Research, Scholarship, and Creativity Grant, 2006, \$1,900.

Matt Rasmussen

Visiting Assistant Professor, English

- *Fingergun*, Kitchen Press, 2006.
- "This Place," *New York Quarterly*, 63, 2007: 70.
- "Reverse Suicide," *Passages North*, 28.1, Winter/Spring 2007: 52.
- "The I," *Passages North*, 28.1, Winter/Spring 2007: 53.
- "Tom Black," *Dislocate*, 3, Spring 2007: 130–31.
- "Land O' Lakes," *Gulf Coast*, 18.2, Summer/Fall 2006: 99–100.
- "Your Guide to the One Bedroom House of Life-Sized Origami," *What Light: This Week's Poem*, 2007: <http://www.mnartists.org/article.do?rid=143133>.
- "Titled," *What Light: This Week's Poem*, 2007: <http://www.mnartists.org/article.do?rid=147236>.
- "Facing a Tree," *New York Quarterly*, 62, 2006: 133.
- "We Are Not the Stars, We Are What's Between Them," *Redivider*, 3.2, Spring 2006: 64.



Sujoy Rao (*Assistant Professor, History*), recipient of a National Endowment for the Humanities Summer Stipend to support his research on the political conflicts in Argentina's provinces from independence in 1810 to 1862.

- "The Orange Leaves," *Redivider*, 3.2, Spring 2006: 62–63.
- "Monet as a Verb," *Redivider*, 3.2, Spring 2006: 65.
- Poetry reading, *Dislocate #3 Launch Party*, The Ritz Theatre, Minneapolis, Minn., April 2007.
- Poetry reading, *The Loft Mentor Series*, Open Book, Minneapolis, Minn., March 2007.
- SASE/Jerome Emerging Writer's Grant, 2007–2008, \$3,300.

Melissa C. Rolnick

Visiting Assistant Professor, Theatre and Dance

- Choreographic Commission, "The Road Home," Arizona State University, October 2007.
- Choreographic Commission, "Ball Strategies 1," Firehouse Performing Arts, April 2007.

- Choreographic Commission, "Ball Strategies 2," California State University, Fresno, April 2007.
- Choreographic Commission, "Fractured Resonance," Cornish College for the Arts, November 2006.
- Choreographic Commission, "Tesseract," Kaleidoscope Dance, April 2006.
- Choreographic Commission, "SOARING," On the Boards: 12 Minutes Max, March 2006; Firehouse Performing Arts, April 2006.

Alisa Rosenthal

Assistant Professor, Political Science

- "Suffering and Democratic Deliberation," American Political Science Association Annual Meeting, September 2007.
- "Bodily Invasion and Liberal Constitutionalism," Constitutionalism

Research Seminar of the Institute for Constitutional Studies, June 2007.

- "Reacting to the Past and Political Theory," Association for Political Theory Annual Meeting, November 2006.
- "Suffering and Injustice," Western Political Science Association Annual Meeting, March 2006.
- "Bodily Invasion and Liberal Constitutionalism," Gustavus Adolphus College Research, Scholarship, and Creativity Grant, 2007, \$1,960.
- Elected, Program Committee, Association for Political Theory.
- Appointed, Discussant and Chairs Committee, Association for Political Theory.

Jeff Rosoff

Professor, Mathematics and Computer Science

- "Courbes Algébriques du Point de Vue Tropical," Centre National de Recherches de Sciences in Paris, July 2006.

Brandy S. Russell

Assistant Professor, Chemistry

- "Linking Student Interests to Science Curricula" (with L.A. Denofrio, D. Lopatto, and Y. Lu), *Science*, 318, 2007: 1872-1873.
- "Heme Attachment Motif Mobility Tunes Cytochrome C Redox Potential" (with L.R. Vacca, T. Ye, B.D. Levin, M.A. Hahn, S.J. Elliott, and K.L. Bren), *Biochemistry*, 46, 2007: 1753-1760.
- "Effects of Heme Pocket Structure and Mobility on Cytochrome C Stability" (with X. Wen, K.M. Patel, and K.L. Bren), *Biochemistry*, 46, 2007: 2537-2544.
- "Catalytic Reduction of NO to N₂O by a Designed Heme Copper Center in Myoglobin: Implications for the Role of Metal Ions" (with X. Zhao, N. Yeung, D.K. Garner, and Y. Lu), *Journal of the American Chemical Society*, 128, 2006: 6766-6767.
- "Best of Both Worlds? The First Year on the Tenure Track at a Research-Active, Primarily Undergraduate Liberal Arts College," University of Illinois at Urbana-Champaign, September 2006.
- "Metal Binding Specificity in Myohemerythrin" (with V. Taylor '09), Greater Gustavus Fund Student-Faculty Collaborative Research, 2007, \$3,500.
- "Myohemerythrin Folding and Metal Site Assembly," Gustavus Adolphus College Research, Scholarship, and Creativity Grant, 2006, \$2,200.

Toshiyuki Sakuragi

Associate Professor, Modern Languages, Literatures, and Cultures

- "The Relationship between Attitudes toward Language Study and Cross-Cultural Attitudes," *International Journal of Intercultural Relations*, 30.1, 2006: 19-31.
- "Gaikokugo Gakushuu to Ibunka Juyou: Daigakusei no Ishiki Chousa," Foreign Language Study and Cross-Cultural Attitudes: A Survey of University Students," Annual Meeting of the Communication Association of Japan, June 2006.
- Session Chair: "Speech Act," Annual Meeting of the Communication Association of Japan, June 2006.
- Session Chair: "Political System and History," Annual Meeting of the Communication Association of Japan, June 2007.
- "Cognitive Linguistic Study of Hmong Language," Gustavus Adolphus College Presidential Faculty-Student Collaboration Grant (with B. Xiong '09 and M. Vang '09), \$7,500.

Paul Saulnier

Professor, Physics

- "The Use of Radial Distribution and Pair-correlation Functions to Analyze and Describe Biological Aggregations" (with K. Younge '05, B. Johnston '05, C. Christenson '05, A. Bohara '04, J. Jacobson '06, and N. Butler), *Limnology and Oceanography Methods Journal*, 4, 2006: 382-391.
- "A Journey from Light Scattering to Biophysics . . ." St. Olaf College, Spring 2007.
- "Studying Swarms in Nature: A Biophysics Project," Gustavus Adolphus College Presidential Faculty-Student Collaboration Grant (with E. Cornell '08), 2007, \$7,500.
- "Twenty-first Century Liberal Education: A Contested Concept," Transylvania University, 2007, \$500.
- Appointed, Proposal Reviewer for the National Science Foundation Research

at Undergraduate Institutions Program.

- Appointed, Proposal Reviewer for the National Science Foundation Atomic, Molecular, and Optical Program.

Amy Seham

Associate Professor, Theatre and Dance

- "Play Fair: Feminist Tools for Teaching Improv," eds. Ann Elizabeth Armstrong and Kathleen Juhl, *Radical Acts: Theatre and Feminist Pedagogies of Change*, Aunt Lute Press, 2007: 135-152.
- Playwright and Director, *Mysterious Bruises*, Minnesota Fringe Festival, August 2006.
- Playwright and Director, *Miranda's Amazing Adventure*, Minnesota Fringe Festival, August 2007.
- Playwright and Director, *Miranda's Amazing Adventure Reprise*, Gustavus Adolphus College, September 2007.
- "Resisting Stereotype in Improv-Comedy," DePauw University, March 2006.
- "Stereotype-Busting Improv," Miami University, April 2006.
- "Play Fair III: Feminist Techniques for Teaching Improv," Association for Theatre in Higher Education Conference, August 2006.
- "Issues for Sustaining a Social Justice Theatre Troupe at a Liberal Arts College," Theatre of the Oppressed Conference, June 2007.
- "Theatre Workshop on Cyber-bullying," Saint Peter Area Children's Theatre, July 2007.
- "Play Fair IV: New Approaches to Teaching Improv," Association for Theatre in Higher Education Conference, August 2007.
- "Play Fair: Feminist Tools for Teaching Improv," Gustavus Adolphus College, Research, Scholarship, and Creativity Grant, 2006, \$2,200.

Peter Shea*Visiting Assistant Professor, Philosophy*

- Produced and directed, *"The Bat of Minerva,"* Twin Cities regional cable, 2006.

Barbara Simpson*Professor, Psychology*

- "Adolescent Sexual Development," Leo A. Hoffmann Center, St. Peter, Minnesota, 2007.
- "Sexual Gender/Identity Issues," Leo A. Hoffmann Center, St. Peter, Minnesota, 2007.
- "An Overview of Personality Disorders," Leo A. Hoffmann Center, St. Peter, Minn., 2007.

Jonathan M. Smith*Associate Professor, Chemistry*

- "Computational and Spectroscopic Investigation of 7-azaindole: Solvation and Intermolecular Interactions" (with N. Erickson '09), Midwest Undergraduate Computational Chemistry Conference, July 2007.
- "Computational and Spectroscopic Investigation of 7-azaindole Solvation and Intermolecular Interactions" (with M. Z. Kamrath '07, K. M. Cruse '07, and N. R. Erickson '09), American Chemical Society National Meeting, April 2007.
- "Computational Analysis of Small Proteins using the WebAmber Interface" (with E. Gorr '06), Midwest Undergraduate Computational Chemistry Online Conference, February 2006.
- "A Computational and Spectroscopic Approach to Determining Protein Structure" (with M. Kamrath '07), Midwest Undergraduate Computational Chemistry Online Conference, February 2006.
- "Computation of solvent effects on vibrational frequencies," Minnesota Supercomputer Institute, 400 Service Units, December 2007.
- "Simulation of Resonance Raman

Spectra Using Consistent Excited State Gradients with Inclusion of Solvent Effects on Gradients and Vibrational Frequencies," Minnesota Supercomputer Institute, 1900 Service Units, October 2006.

- "Simulation of Solvent Effects on Resonance Raman Spectra," National Science Foundation-Research Site for Educators in Chemistry, \$10,161, January 2006.
- National Science Foundation, CAREER program reviewer, October 2007.
- Executive Committee, Midwest Undergraduate Computational Chemistry Consortium.

Mary M. Solberg*Associate Professor, Religion*

- "Wisdom's Urgent Cry," Faith and Feminism Conference, November 2007.
- "How Should We Know? Constructing an Epistemology for an Age of Biological Intervention," Association of Teaching Theologians (ELCA), August 2007.
- "Just Peace," Twin Cities ELCA Ministerium, January 2006.
- "The German Christians in Print: Translations of Selected *Deutsche Christen* Texts, 1933-45," National Endowment for the Humanities Summer Stipend, 2007, \$5,000.
- Appointed, Proposal Reviewer for National Endowment for the Humanities Summer Stipends, 2007.

Lori Steffen*Assistant Professor, Nursing*

- Appointed, Editorial Advisory Board, *Creative Nursing Journal*.

Katherine Stenger*Assistant Professor, Political Science*

- "Same-Sex Marriage: The Impact of Religiously-Motivated Political Action on Public Policy," eds. Steven Jones and Ann Duncan, *Church and State*

Issues in America Today, Praeger, 2007: 37-73.

- "The Underrepresentation of Liberal Christians: Mobilization Strategies of Religious Interest Groups," *The Social Science Journal*, 43, 2006: 391-403.
- "One God, Many Arguments? Examining Argument Frame Diversity in Religious Group Rhetoric" (with K. Johnson '07), Midwest Political Science Association Annual Convention, April 2007.
- "Breaking the Chains? Constraint and the Political Rhetoric of Religious Interest Groups," Midwest Political Science Association Annual Convention, April 2006.
- "Rhetorical Strategies of Religious Interest Groups," Gustavus Adolphus College Research, Scholarship, and Creativity Grant, 2006-2007, \$2,200.

Joyce Sutphen*Associate Professor, English*

- Co-editor, *To Sing Along the Way: An Anthology of Minnesota Women Poets from the Territorial Days to the Present* (with C. Wanek and T. Tamarro), New Rivers Press, 2006.
- "Going Someplace," and "After That," eds. B. Hendricksen and R. Johnson, *From the Other World, Poems in Memory of James Wright*, Lost Hills Books, 2007.
- "Harrow," and "Death Inc.," ed. Lightsey Darst, *What Light: A Poetry Anthology from Minnesota*, mnarts.org., 2007.
- "Home to the Late Late Movie," "Death Becomes Me," and "Getting the Machine," ed. Robert Hedin, *Where One Voice Ends Another Begins: 150 Years of Minnesota Poetry*, Minnesota Historical Society Press, Borealis Books, 2007.
- "Difficulties of Travel," "What Every Girl Wants," and "Traveling Poem," ed. John Gaterud, *Stardust and Fate - The Blueroad Reader*, Blueroad Press, 2007.
- "School Movies," ed. Todd Pierce, *We Are What We Watch: Poets Respond to*



Joyce Sutphen (Associate Professor, English), recipient of the Gustavus Faculty Scholarly Accomplishment Award in 2004 and co-editor of *To Sing Along the Way: An Anthology of Minnesota Women Poets from the Territorial Days to the Present*.

Movies, TV, and Media, Syracuse University Press, 2006.

- "Apple Season," *Key Ingredients: America by Food*, Smithsonian Exhibition Tour, 2006.
- "Living in the Body," ed. William H. Roetzheim, *The Giant Book of Poetry*, Level Four Press, 2006.
- "The Blue in the Distance," "Even in My Time," "The Dream I Often Have," "Say It Again," "The Shadow," and "The Perfected Presence," *The Kean Review*, December 2007.
- "Just for the Record," *Dust and Fire*, March, 2007.
- "Guys Like That," and "Things You Didn't Put on Your Resumé," *Skirt Magazine*, Atlanta Ga., March 2007.
- "What the Clouds," *Magma 36*, London, Fall 2006.
- "Combing the Shore," *Water-Stone Review*, Fall 2006.

- "From the 6th Floor," *Courtland Review*, Fall 2006.
- "Uncle Floyd and Uncle Al Shoot Some Pool," *Whistling Shade*, Fall 2006.
- "Footnote," *Dogwood*, Spring 2006.
- "Myth," *Sidewalks*, Spring 2006.
- "Reading the Way into Myself," *The Rake: 17 Voices: Stories, Poems and Essays*, Minnesota Writers, May 2006: 32-37.
- "The Book of Hours," *The Writer's Almanac*, 2007.
- "Secret Agent Man," *The Writer's Almanac*, 2007.
- "Guys Like That," *The Writer's Almanac*, 2007.
- "Things You Didn't Put on Your Resumé," *The Writer's Almanac*, 2006.
- "Naming the Stars," POETRY 180 Project, Library of Congress, 2006, <http://www.loc.gov/poetry/180/>.
- "Mall Theology," "Intimations of

Mortality," "In the End," *Poetry Is*, 2006, <http://www.poetryis.com/>.

- "The Peaches," "High Heels," *Bare Root Review*, 2006, <http://www.southwestmsu.edu/barerootreview/index.htm>.
- "Harrow" and "Death, Inc.," 2006, Minnesota Artists Online, <http://www.mnartists.org/>.
- "The Day," *Edutopia*, 2007, <http://www.edutopia.org/damien-b-m-english>.
- "Some Glad Morning" and "In the Beginning," St. Paul Chamber Orchestra and the Spaghetti String Band, Raspberry Island Bandstand, June 2006.
- Reading, *From the Other World: Poems in Memory of James Wright*, Edina, Minn., December 2007.
- "Form and the Line," Panel Discussion, Lutheran Festival of Writing Conference, November 2007.

- Reading, College of St. Catherine, October 2007.
- Reading, Sligo Poetry Workshop, Ireland, August, 2007.
- Reading, Brandeis Library Benefit, June 2007.
- Reading, Minnesota Landscape Arboretum, June 2007.
- Reading, St. Anthony Public Library, April 2007.
- Reading, Minnesota State University, Mankato, April 2007.
- "Not wondering at the present nor the past: Beyond Time in the *Sonnets*," Shakespeare Association of America Annual Convention, April 2007.
- Reading, University of Maine, Farmington, March 2007.
- Reading, University of Minnesota, Morris, Poetry Blow-out! February 2007.
- Reading, The Open Book at the Loft, February 2007.
- Reading, University Club, SASE Reading, December 2006.
- "Finding Your Poetic Center," Wisconsin Fellowship of Poets, November 2006.
- Reading, College of St. Catherine, October 2006.
- Visiting Writer and Reading, Bismarck State College, April 2006.
- "Turn, Turn, Turn," Pedagogy Forum, Association of Writers and Writing Programs Annual Convention, March 2006.
- Reading Coffee-house Poetry at the Troubadour, London, UK, January 2006.
- "Poetry Workshop with Thomas Lynch," Sligo, Ireland, Gustavus Adolphus College Research, Scholarship, and Creativity Grant, 2007, \$2,200.
- Honor Award in Poetry, *To Sing Along the Way*, Midwest Booksellers Association, October 2007.
- Willa Literary Award, Winner, Poetry, *To Sing Along the Way*, Women Writing the West, October 2007.
- Dogwood Poetry Prize Finalist, *Dogwood: A Journal of Poetry and Prose*, Fairfield University 2007.

- Judge, *What Light* series for mnaartists.com, May 2007.

Paula Swiggum

Associate Professor, Nursing

- "Experience in Tanzania," Sigma Theta Tau, Chi Chapter, College of St. Catherine, October 2006.
- "Being in Another World: Transcultural Student Nurse Experiences Using Service Learning with Homeless Families" (with R.Hunt), *Journal of Transcultural Nursing*, 18.2, 2007: 167-174.
- "Being in Another World: Developing Cultural Competence Through Service Learning" (with R. Hunt), International Transcultural Nursing Annual Conference, November 2006.

Roland Thorstenson

Professor, Scandinavian Studies

- Translation: *Time Is a Ship That Never Casts Anchor – Sami proverbs* (with Harald Gaski, Cálliid Lágádus, Karasjok), Norway, March 2006.
- "Vilhelm Moberg as a Dramatist for The People," *Ljuder*, Sweden, June 2006.
- "In Search Of Linnea," Gustavus Adolphus College, December 2006.
- "Linnaeus at 300," Gustavus Adolphus College, April 2007.
- "Linnaeus at 300," American Swedish Institute, May 2007.
- "Linnaeus at 300," San Diego State University, September 2007.

Katherine A. Tunheim

Visiting Assistant Professor, Economics and Management

- "Presidents in Crisis? An Exploratory Study for Understanding Leadership Challenges in Higher Education" (with S. Manderscheid), Asia Academy of Human Resource Development Conference, November 2007.
- "A Leadership Model for Spouses of Lutheran College Presidents," Lutheran Educational Conference of North America, February 2007.

- "A Leadership Model for Spouses of Lutheran College Presidents," Asia Academy of Human Resource Development Conference, November 2006.
- "Competency Model for the Role of President of Religious-Affiliated Colleges," International Academy of Human Resource Development, February 2006.
- "Building and Maintaining Highly Effective Teams," Lutheran Educational Conference of North America, February 2006.
- "Discovering the Leader within You," Winter Leadership Conference, Concordia College, January 2006.

Michelle Twait

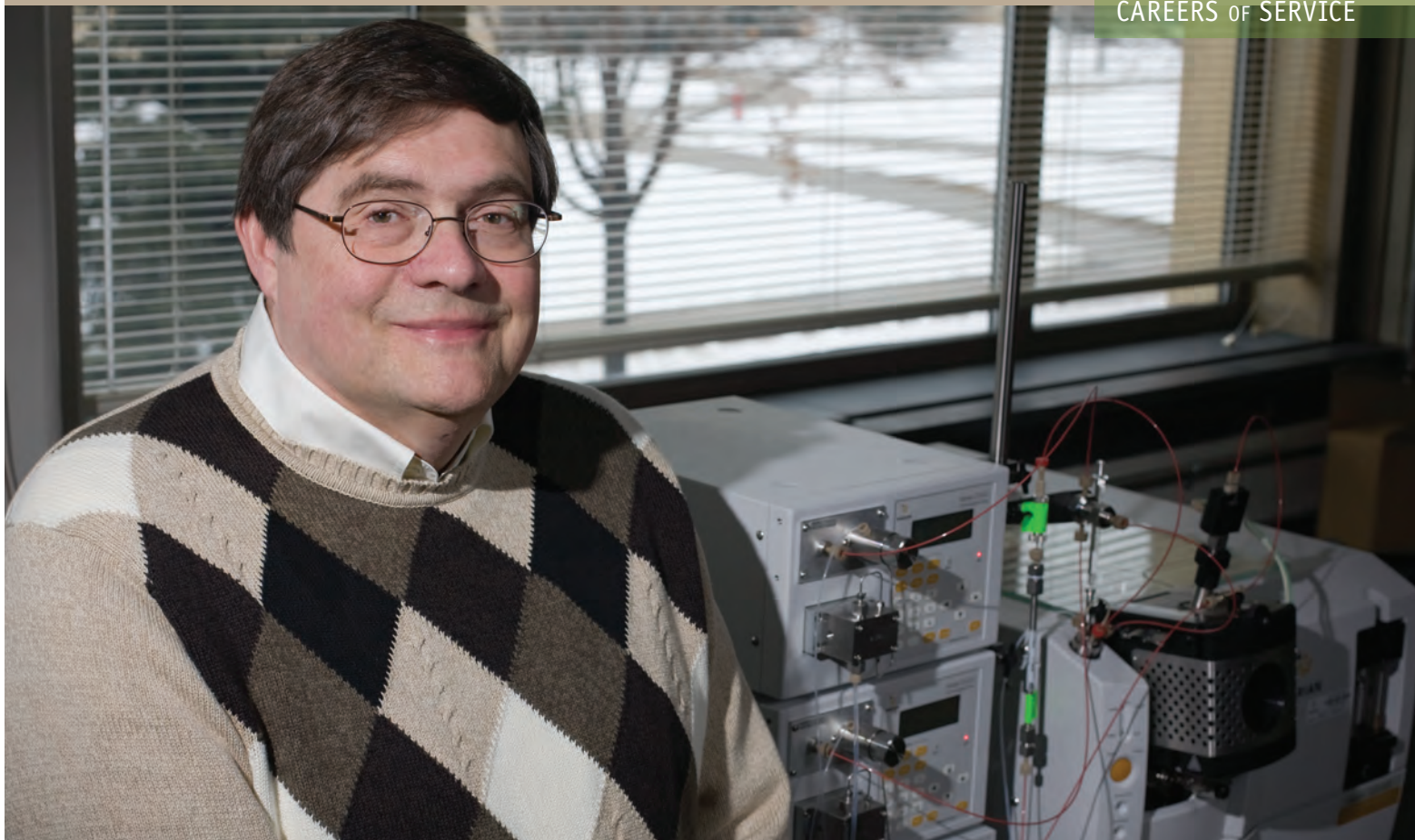
Assistant Professor, Library

- "Crossroad and Detours on the Path to Information Seeking," Academic and Research Libraries Division Day, April 2007.
- "Designing Library Websites to Support Student Learning: A User-Centered Approach" (with A. Hulseberg), Academic and Research Libraries Division Day, April 2006.
- "The Library as a Mentoring Community" (with B. Fister and K. Martin), Minnesota Oberlin Group Workshop, January 2006.
- Appointed, Professional Education Committee, Association of College and Research Libraries.
- Appointed, Doctoral Dissertation Fellowship Committee, Association of College and Research Libraries.

Phillip Voight

Associate Professor, Communication Studies

- "Estate Gift Planning and Campaign Management," Pi Kappa Delta Conference on Fundraising and Development, November 2007.
- "Forensics Metaphors: (Re)framing Intercollegiate Speech and Debate," National Communication Association, November 2007.



Larry Potts

Gustavus faculty member 1972–2008

“Think of the transformation that our students go through,” said chemistry professor Larry Potts this spring, musing on more than three decades teaching Gustavus undergraduates and supporting alumni. “They start here so young, bumping into doors and things. But then there is this amazing metamorphosis and four years later, they leave us, poised and confident, really knowing their material.

“What’s really neat for me is to follow students’ development after Gustavus and to encourage them as they go out into the world.” Championed by a college chemistry professor throughout his own career, Potts said of mentorship: “It’s a very natural and wonderful thing.” Potts often invites alumni back to campus to give seminars, and he has consulted for corporations, like 3M,

where his former students are employed.

Industry work and research have kept Potts current. “Astonishing” is how he describes the pace of change affecting his professional realm. “I teach in the area of analytical chemistry, where the whole nature of taking measurements at low concentrations, for example, has changed radically. The course material I teach has got to be about 80 percent different today from what I taught when I started. This has kept me hopping.”

Though highly specialized and technical, Potts’s work with students is timely and topical. A recent conversation about the practical applications of his research niche covered headline news, from

pharmaceuticals found in municipal water supplies to controversy over reports of trace chemicals leaching from polycarbonate drinking bottles. “Students are more interested than ever in the role of chemistry in our environment and daily lives.”

More than half of Potts’s students go on to graduate school. Others go directly into employment, where they

“Mentorship: It’s is a very natural and wonderful thing.”

apply their chemistry background in a variety of fields. In the coming years, as Potts turns his attention to research full-time, he will continue tending to those mentoring relationships with former students—friendships that have endured for more than 30 years.



Linnea Wren (Professor, Art and Art History), recipient of a Gustavus Presidential Faculty-Student Collaboration Grant that supported her research on the collection of Ojibwe and Lakota art works and artifacts in the Cass County Museum and Historical Society in Walker, Minnesota.

- "Narrative as a Fundraising Tool in Forensics Endowment Campaigns," National Communication Association, November 2006.
- "Fundraising and Development for Forensics Professionals," National Communication Association-Pi Kappa Delta Pre-conference on Fundraising and Development, November 2006.
- Elected, President, Pi Kappa Delta.
- Appointed, Chair of National Council Development Planning Committee, Pi Kappa Delta.

Marie Walker

Associate Professor, Psychology

- "Self-relevant health risk: Avian flu and differential processing styles in response to uncertainty," Annual Meeting of the Society for Personality and Social Psychology, January 2007.

Suzanne Wilson

Associate Professor, Sociology and Anthropology

- "The Colombian Contradiction: Lessons Drawn From Guerilla Experiments in Demobilization and Electoralism" (with Leah A. Carroll), eds. Kalowatie Deonandan, David Close, and Gary Prevost, *From Revolutionary Movements*

to Political Parties: Cases from Latin America and Africa, Palgrave Macmillan, 2007: 81-107.

- "Friend or Foe? The Colombian State and the Paramilitaries (1982-2006)," Latin American Studies Association XXVII International Congress, September 2007.

David Wolfe

Associate Professor, Mathematics and Computer Science

- *Lessons in Play: An Introduction to the Combinatorial Game Theory* (with Michael Albert and Richard Nowakowski), A. K. Peters, February 2007.

- "When Multiplication Mixes Up Digits," *Mathematics Magazine*, 80, December 2007: 380-383.

Janine Wotton

Assistant Professor, Psychology

- "Age and hearing impairments influence the perception of vowels in context" (with R. Elvebak '07 and M.J. Ferragamo), *Aging and Speech Communication*, Bloomington Indiana, October 2007.
- "Sentence context influences vowel perception in reverberant conditions," (with K. Welsh '06, C. Smith '07, R. Elvebak '07, S. Haseltine '07, and Shinn-Cunningham), B. ASA 120, A3358, Acoustical Society Meeting, Honolulu, November 2006.

Linnea Wren

Professor, Art and Art History

- Curator, *Identify Me*, Ephemeral Space, June 2006.
- "Interfaith Communication through the Arts," International Conference of Art and Christian Enquiry, July 2007.
- "Contemplative Practices in Seeing and Believing," Wabash Symposium on Theology and the Arts, July 2007.
- "Ojibwe Art: Research, Photographic Documentation and Electronic Presentation of the Collections of the Cass County Museum, Walker, MN" (with E. Dinsmore '08), Gustavus Adolphus College Presidential Faculty-Student Collaboration Grant, 2007, \$7,500.
- Appointed, Consultant to the Wabash Center for Theology and the Arts.

Barbara L. Mattson Zust

Associate Professor, Nursing

- "Bittersweet knowledge: The long-term impact of an international service experience," (with T.A. Evanson), *Journal of Nursing Education*, 45.10, 2006: 412-419.
- "Meaning of INSIGHT participation among women who have experienced

intimate partner violence," *Issues in Mental Health Nursing*, 27.7, 2006: 775-793.

- "Labor induction practices in a rural, Midwestern hospital," (with N. Briggs '05), *Online Journal of Rural Nursing and Healthcare*, 6.2, 2006: 17.
- "Death as a transformation of wholeness: An 'aha' experience of health as expanding consciousness," *Nursing Science Quarterly*, 19.1, 2006: 57-60.
- "Writing as a means of raising advocacy," 14th Conference of the Nursing Network on Violence Against Women International, April 2006.
- "What are we doing for our incarcerated sisters?" 15th Conference of the Nursing Network on Violence Against Women International, October 2007.
- Educator of the Year Award by the Nursing Network on Violence Against Women International.
- Elected, Secretary for Nursing Network on Violence Against Women International.
- Appointed, Editor of Nursing Network on Violence Against Women International Newsletter.

Listings were compiled from faculty member submissions by the staff of the John S. Kendall Center for Engaged Learning.

acknowledgments

Gustavus Research, Scholarship, and Creativity, 2006 & 2007 was produced by the John S. Kendall Center for Engaged Learning, Jennifer K. Ackil and Laura L. Behling, co-directors.

All photography is by Joe Lencioni, shiftingpixel.com, unless noted otherwise.

"Careers of Service" features were written by Gwendolyn Freed, vice president of the Office of College Relations.

Editorial services were provided by Steve Waldhauser, director of editorial services at the College.

Graphic design, typography, and production were provided by Sharon Stevenson, director of design services at the College.

Pre-press, printing, and assembly were provided by J-C Press, Owatonna, Minnesota.

Many thanks to Cathryn Blaukat, administrative secretary at the John S. Kendall Center for Engaged Learning; Mary E. Morton, provost at the College; and Mariangela Maguire, academic dean at the College.

The John S. Kendall Center for Engaged Learning



File photo

John S. Kendall '49

The John S. Kendall Center for Engaged

Learning, named to honor the longtime faculty member and president of Gustavus Adolphus College, aims to assist faculty in two specific areas: disciplinary expertise and pedagogical proficiency. As academic fields develop and change, new ideas emerge, new texts surface, and new connections among theories are examined.

To stay engaged, faculty members read and research, converse with other scholars in their field to share their discoveries, and then join in the chorus of thought through the presentation and publication of their ideas.

And just as the mark of a good scholar requires active responsibility to one's discipline, so too does the mark of a good teacher. Gustavus teacher-scholars are committed to maintaining scholarly and creative expertise not only for their own erudition, but also to bring these ideas back to their classes. They share with their students the best of scholarly thought, and model for them what it means to be engaged in and actively contributing ideas to the world. Moreover, they continually think about and search for the best ways to engage their students in the excitement and challenge of learning.

The Kendall Center supports faculty members in their scholarly and creative work and in their pedagogical development by administering funds necessary to present their work at professional conferences, by disbursing small grants to test new pedagogical techniques, and by providing opportunities for them to work across disciplinary boundaries to learn from each other as they share and develop new ideas and areas of teaching expertise. In short, the John S. Kendall Center for Engaged Learning supports faculty members as they strive to achieve their highest potential as scholars and teachers in the service of helping Gustavus students attain their own true potential as scholars, artists, and leaders in society.

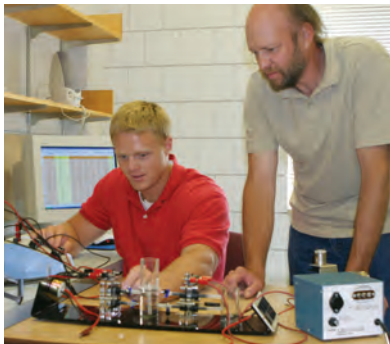
Priscilla Briggs



Steve Waldhauser



Steve Waldhauser



Faculty development efforts supported by the John S. Kendall Center for Engaged Learning include (from top):

Service Learning for Social Justice Program, Cuba, 2004: Faculty members Mary Solberg (second from left), Pamela Kittelson (fourth from left), and Nancy Hanway (holding sugar cane) visit with workers in a sugar cane plot maintained in an urban agricultural garden cooperative in Havana.

David Goldstein '08 (left) collaborated with art professor Lois Peterson on a ceramic installation for the choir loft of Christ Chapel. Molded clay parts that were yet to be fired are on the table before them. Their work was supported by a Presidential Faculty-Student Collaboration Grant.

Supported by a Presidential Faculty-Student Collaboration Grant, student Jared Sieling '08 (left) and physics professor Chuck Niederriter test the energy storage efficiency of a hydrogen fuel cell.



Gustavus Adolphus College is a private, coeducational, liberal arts college affiliated with the Evangelical Lutheran Church in America and sited on a 340-acre campus overlooking the historic river town of St. Peter, Minnesota, 70 miles southwest of the Twin Cities of Minneapolis and St. Paul. Since its founding in 1862, it has valued its Swedish and Lutheran heritages. The College has developed a distinguished academic reputation and is known for its strong science, writing, music, study-abroad, and service-learning programs. Gustavus has hosted a chapter of Phi Beta Kappa since 1983 and is internationally recognized for its annual Nobel Conference.



The John S. Kendall Center for Engaged Learning

800 West College Avenue | St. Peter, Minnesota 56082 | 507-933-6227 | gustavus.edu/kendallcenter/