



AN OUTREACH OF CHURCH RELATIONS

THE SPIRE

Strengthening the presence of the Church in the College and the presence of the College in the Church.

Volume 15:2 | Winter 2014

INSIDE

Endowing the director of Church Relations position

Meet Kari Louwagie '16, Church Relations intern

Annual Faith Conference

Fourth Annual Women in Leadership Conference

Exploring Religious Questions Series – Spring 2014

Being a part of the Gustavus Adolphus College Association of Congregations

2013 GACAC Service Award goes to World Altering Medicine co-founder

SARA MASTERS, Assistant Director for Church Relations, Center for Servant Leadership



The recipient of the Gustavus Adolphus College Association of Congregations and Alumni 2013 Service Award is Dr. Daniel Dewey '93 of Maple Plain, Minnesota. Gustavus President Jack Ohle presented

the award to Dewey on November 18, 2013, during Daily Sabbath.

Dr. Dewey is recognized for his vision and leadership in co-founding World Altering Medicine, a non-profit organization dedicated to providing medical care for needy patients in resource-poor areas of the developing world.

After graduating from Gustavus Adolphus College in 1993, Dewey began a two-year term of service in the United States Peace Corps. During his time in the Peace Corps, he was deeply affected by the circumstances of those living in poverty and became determined to develop skills that could be utilized to better the conditions of those living in the world's developing areas. Especially concerned about the health care conditions of the poor, he entered medical school at the University of Minnesota, where he focused his training on family medicine and participated in many medical mission trips where he further honed

his interest in international medicine. Dewey was part of the Baylor International Pediatric AIDS Initiative in Africa for nearly two years. During this time in Africa, he primarily provided HIV care in Uganda and Swaziland, but also traveled and worked in Mozambique, South Africa, Namibia, Lesotho, Botswana, and Malawi. Upon returning to the United States, he completed a fellowship in emergency medicine in Tennessee and then returned to his native Minnesota, where he is in full-time emergency medicine practice with Health Partners.

World Altering Medicine was founded in 2006 with a primary focus on providing medical resources to Africa. Current projects work to strengthen oxygen systems in pediatric wards in Malawi, provide emergency financial assistance to needy patients in Swaziland, Uganda, and Malawi, and send volunteer health care professionals to poorly resourced hospitals in the developing world.

Since November, World Altering Medicine has hired a new program manager who will be stationed in Kabudula, Malawi, helping manage the programs on the ground. A new Peace Corps volunteer will start there in April. They continue to utilize a two-pronged community empowerment approach focusing on education and health care. In addition, Dewey says that they have been solidifying their partnerships

Continued on page 5

**GUSTAVUS ADOLPHUS
COLLEGE ASSOCIATION
OF CONGREGATIONS
BOARD OF DIRECTORS
2013-2014**

The Rev. Kristen Capel

Easter Lutheran Church
Eagan, Minn.

Cindy Olson Hoffer '80

Normandale Lutheran Church
Edina, Minn.

Billy Johnson '92

Mount Olivet Lutheran Church
Minneapolis, Minn.

The Rev. Craig Pederson '90

Northeast Community Lutheran
Church
Minneapolis, Minn.

The Rev. Dean E. Smith

Trinity Lutheran Church
Owatonna, Minn.

John S. Vollum '71, Vice President

Family of Christ Lutheran Church
Chanhausen, Minn.

Becky Schmidt Weiland '88

St. Philip the Deacon Lutheran
Church
Plymouth, Minn.

**The Rev. Heather Teune Wigdahl
'95, President**

Our Savior's Lutheran Church
Menomonie, Wis.

The Rev. Grady St. Dennis '92

Ex Officio

Director for Church Relations,
Center for Servant Leadership,
and College Chaplain, Gustavus
Adolphus College
Mount Olivet Lutheran Church
Minneapolis, Minn.

Sara Masters, Ex Officio

Assistant Director for Church
Relations, Center for Servant
Leadership, Gustavus
Adolphus College
Immanuel Lutheran Church
Eden Prairie, Minn.

From the director

PASTOR GRADY ST. DENNIS, Director for Church Relations



“Jesus called the children to him and said, ‘Let the little children come to me, and do not hinder them, for the kingdom of God belongs to such as these. Truly I tell you, anyone who will not receive the kingdom of God like a little child will never enter it.’” Luke 18:16-17

Warm greetings to you from the Center for Servant Leadership at Gustavus Adolphus College! We rejoice in the many ways we are partners in ministry with you. The bond of faith in Jesus Christ and the desire to love and care for children and young adults has always been something we share in common with one another in our mission efforts. It has been my observation that when we have had the opportunities to interact with one another we have found these times to be ones of mutual encouragement and new learning. From spending time this year with congregation youth boards reflecting upon strengths development inventories, to hosting hundreds and hundreds of youth retreating on campus with their congregations, there have been many wonderful opportunities to engage each other. We are blessed by these relationships.

In this issue of *The Spire* we highlight what will be yet another excellent opportunity for a shared learning event in the upcoming Gustavus

Faith Conference on April 26, 2014. The focus of the conference will be upon the Lutheran commitments to children, youth, and families. As with each conference, we look forward to the festive time together and many practical take-home ideas and inspirations for our congregations and community youth development efforts.

The Church and College connection is a relational treasure for each of us to enjoy. So, whether it is at the conference in April or through other educational offerings or retreats, I hope you will make it a priority this year to take advantage of the resources available through the Center for Servant Leadership and the Gustavus Association of Congregations. May the Lord strengthen our relationship this year that together we might do even more to strengthen the tie of faith in Jesus Christ that binds us and give us a renewed imagination on how best to love and grow the children and young adults entrusted to our care.

Connected in faith: Endowing the director for Church Relations position

The director and staff of Church Relations serve as a critical link in building and nurturing relationships between people and between congregations and the College. For this reason, the Association of Congregations has launched a new effort to endow the position of the director for Church Relations. The endowment recognizes the value of this role, as a blessing to both the College and to congregations.

A donation to the Director for Church Relations Endowment Fund is a gift that lasts beyond a lifetime. Every gift counts—by putting our gifts together we can establish and grow the

endowment, helping secure the future of Church Relations at Gustavus Adolphus College.

For those who contribute to this endowment, it's a chance to affirm a value: in this context, the value of the Church-College partnership and the value of engaging in conversations about faith as part of the liberal arts experience.

For more information on the Director for Church Relations Endowment Fund and how to make a gift, please contact Grady St. Dennis at stdennis@gustavus.edu, 507-933-7661; or Jim Rothschiller at jrothsch@gustavus.edu, 952-686-8255.

**UNDERSTANDING
LUTHERAN
COMMITMENTS TO
CHILDREN
AND
YOUTH**

Theological Foundations,
Historical Perspectives,
and Contemporary Initiatives

**ANNUAL FAITH CONFERENCE
SATURDAY, APRIL 26, 2014**

Worship | 10:45 a.m. | Christ Chapel | The Rev. Timothy Coltvet
Keynote Speaker | 11:30 a.m. | Christ Chapel | Dr. Marcia J. Bunge
Afternoon Panel Discussion | 1:45 p.m. | Christ Chapel

Panelists include Maureen Warren, chief family services officer for Lutheran Social Service; Daniel Lee, vice president of external relations, Lutheran World Relief; the Rev. Timothy Coltvet, Luther Seminary; and Tim Schmidt, managing partner, Thrivent Financial for Lutherans.

GUSTAVUS
GUSTAVUS ADOLPHUS COLLEGE

Open to the public. Cost is free but please register at www.gustavus.edu/faithconference.
 Sponsored by the Gustavus Adolphus College Association of Congregations, the Gustavus Center for Servant Leadership, and Thrivent Financial for Lutherans.

Road to the Reformation: Deepening Our Lutheran Theological Roots

Annual Faith Conference

April 26, 2014

Free and open to the public.

Please register at www.gustavus.edu/faithconference.

MEET KARI LOUWAGIE '16, CHURCH RELATIONS INTERN



Kari Louwagie of Cottonwood, Minn., joins the staff of Church Relations as an intern for the spring semester. A junior at Gustavus this year, she will

take a leadership role in planning and hosting the Student Leadership Day on April 26, 2014.

More than 60 percent of Gustavus students participate in internships while they are enrolled at the College. Internships are intended to give upperclassmen new perspectives on possibilities for the professional world following their undergraduate experience. These are meant to be intriguing, challenging, and instructional. Interns contribute in meaningful ways in hands-on experiences that cannot be learned in the classroom.

Louwagie, a religion major, developed her passion for ministry growing up in Cottonwood, Minn. She frequently served as assisting minister, a part of youth groups, and served on her church's Music and Worship Committee. At Gustavus she is involved in band, choir, and Mosaic as well as being a chapel apprentice. Her plan is to go to seminary after graduation.

Regarding outcomes for this internship experience, she says, "This internship will help me achieve my future goals by allowing me to job-shadow people who work in different areas in ministry. In doing this, I will be able to more clearly discern which area of ministry I want to go into. I will also get to learn how to plan church-related events, which is an important part of ministry."

Register NOW for the fourth annual Women in Leadership Conference

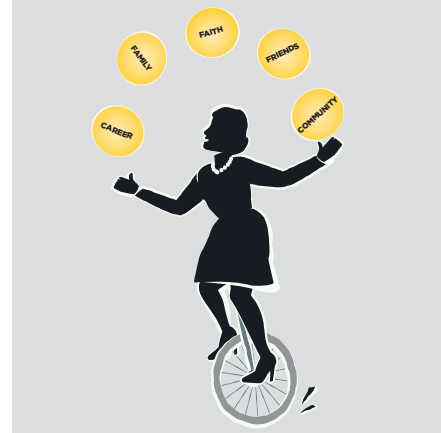
April 10, 2014, 8:30 a.m.–2:30 p.m., American Swedish Institute

The fourth annual Gustavus Women in Leadership Conference, “Leadership for the Greater Good: How Talented Women Thrive,” will be held on Thursday, April 10, at the American Swedish Institute in Minneapolis. This year’s conference will feature keynote speakers Sarah Cuthill ’85 (principal, Deloitte Tax-Global Employer Services) and Margaret Anderson Kelliher ’90 (president and CEO, Minnesota High Tech Association) along with several other business professionals who will lead various breakout sessions.

Tickets for the conference can be purchased online at www.gustavus.edu/forms/gwil-conference. Ticket prices are \$25 for students, \$35 for recent graduates (2008 and later), and \$75 for the general public until March 10, and \$100 for registrations received from March 11 through April 3.

In addition to the keynote speakers, conference attendees will have the opportunity to attend two of the breakout sessions led by the following individuals:

- **Grayce Belvedere-Young**
(founder & CEO of Lily Pad Consulting)
- **Karen Cowart**
(director of community and public affairs, BP)
- **Mary Brainerd**
(president & CEO, Health Partners)
- **Nikki Sorum**
(divisional vice president, Thrivent Financial for Lutherans)
- **Patricia Mitchell**
(president & CEO, Ordway Center for the Performing Arts)



This conference is organized by Gustavus Women In Leadership, a student/alumnae program that seeks to help the women of Gustavus in their academic, professional, and personal leadership development. Gustavus students Ellen Krueger ’14 and Elizabeth Johnson ’14 are co-chairs of the conference.

For more information about the Gustavus Women In Leadership Conference, visit the conference’s website at gustavus.edu/leadership/women/2014conference.php.

Exploring Religious Questions Series – Spring 2014

Christian Faith and Economic Justice: Biblical Themes, Current Realities, and Ethical Choices

Mondays 7–9 p.m., February 17, 24, March 3, 10, and 17

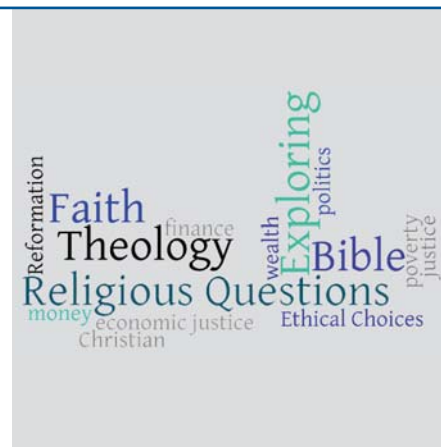
Join us at Gustavus Adolphus College this spring to be a part of another in-depth mini-course series.

Both as individuals and as a nation, we face a range of economic challenges. As a way to think more deeply about relationships between the Christian faith and current economic realities, the sessions in this series explore the following questions:

- What does the Bible specifically say about financial responsibility and economic justice? What are some of the central biblical texts that speak to contemporary questions about money, wealth, and justice to the poor? What wisdom does the Bible offer us in today’s hard times?
- During the Reformation, when the economic landscape was rapidly changing and capitalism was emerging, what did Martin Luther and other reformers say about economic justice? How did they respond to the needs of the poor, unjust economic structures, and rising interest rates? How might their ideas and strategies help Christians today reflect on their personal finances and our country’s economic policies?

- What ethical issues are capturing the most attention of leading economists today? What are they saying about poverty, sources of the current economic crisis, and local and global socio-economic inequalities? What solutions and notions of justice are economists proposing? How might their theories inform or resonate with Christian perspectives?
- What insights are Christian theologians and ethicists today offering about the economic crisis, economic justice, and how best to make ethical and theologically informed financial choices as individuals and as a nation? What economic policies are Lutherans, Roman Catholics, and other church bodies proposing in their social teachings and statements? How can faith be active in love as we seek economic justice and make difficult financial and political choices?

By exploring these and other questions, and by mining resources from the Bible, economics, and theology, this series aims to help all participants reflect on ways they might best live out their faith



in a complex global economy.

The five sessions will be led by scholars in the areas of Bible, economics, and Christian ethics. Instructors are Kristian Braekkan, assistant professor of economics and management; Marcia Bunge, professor of religion and Bernhardson Distinguished Chair of Lutheran Studies; J. Blake Couey, assistant professor of religion; Casey Elledge, associate professor of New Testament; and Mary Gaebler, associate professor of theological ethics.

Anyone who wants to explore this topic can sign up by downloading the registration form at www.gustavus.edu/churchrelations; or contact Sara Masters at 507-933-7001, smasters@gustavus.edu.



Service Award Ceremony: from left: President Jack Ohle, Dr. Dan Dewey, Luciana Dewey, Angela Dewey (and Flynn); Chaplain Grady St. Dennis

Continued from cover

with other non-profit organizations—WATSI, Heart Gift, and 500 Miles. You can read patient stories of life altering medical interventions on their webpage, www.worldalteringmedicine.org.

The visit to Gustavus in November by Dr. Dewey renewed his resolve. “The positivity catapulted my drive to expand and improve World Altering Medicine,” he says. “In fact, we have established

an internship through Gustavus that started this past January, with Erin Clark ’14, being the first intern.” Erin will be working on World Altering Medicine’s social media, marketing, and communications.

We here at Gustavus wish the best for Dr. Dewey and his family and we are proud to see a fellow Gustie doing such life-changing work

in Africa. To find out more information about World Altering Medicine, please visit www.worldalteringmedicine.org.

The Gustavus Association of Congregations and Alumni Service Award recognizes alumni and former students of Gustavus Adolphus College who have made distinctive commitments and contributions to the service of others.

Resources available for members of the Gustavus Association of Congregations

How can Gustavus resources help your congregation in 2014? We have a wealth of resources available to our Association member congregations, and we want to serve you!

Sally Bottin, council president of Zion Lutheran Church in Lake Crystal, recently took advantage of our pulpit supply resource. “Through the Gustavus Adolphus College Association of Congregations (GACAC) we have access to multiple services, resources and opportunities which add a dimension to our church,” says Bottin. “We have been in the call process during the last 11 months and have used the resource of pulpit supply on several occasions making our time of transition much smoother.”

Being a part of the Association has many benefits. According to Pastor Wayne Peterson, of St. Barnabas Lutheran Church in Plymouth, “St. Barnabas has experienced that being part of GACAC has both tangible and intangible benefits. The tangible benefits St. Barnabas has received include great, moderately priced space for confirmation and church council retreats and access to excellent speakers for adult education groups. The intangible benefit is that it reminds our members of the importance of Lutheran higher education—not only at Gustavus, but all

of our excellent ELCA colleges.”

Listed below are many of the signature programs from Church Relations in the Center for Servant Leadership. Some congregations use multiple resources every year; others use fewer or as needed.

- **Confirmation Retreats** held on campus may be day or overnight retreats during the academic year. Hostel space is available for overnight reservations. Please book at least 6 to 8 weeks in advance; space is limited for groups over 40. Classrooms and space for recreation are available to meet your programming needs.
- **Adult Retreats** are welcomed in the Retreat Center on campus. Church councils, staffs, and men’s and women’s groups enjoy time to socialize and work together, build relationships, and enjoy the energy of a Lutheran campus.
- **Individual Clergy Sabbath Retreats** are available to Association pastors, usually scheduled during the week.
- **Partners in Education**—Over 30 faculty and staff are available to make presentations on a wide range of topics during Sunday morning forums in Association congregations. Church Relations pays for one honorarium per year (until funds are depleted). The congregation pays mileage, also honoraria for subsequent presentations.
- **Partners in Music**—Student vocal and instrumental musical ensembles are available to visit your congregation to assist in worship. Congregation pays honorarium and mileage.
- **Gustavus Youth Outreach**—This student-led fellowship organization seeks to serve the needs of congregational youth programs, assisting in programming with your youth for day or evening, lock-in or retreat settings. Congregation must cover mileage expenses, meals if applicable, cost of supplies or special materials, and housing if needed. A love offering to GYO is appreciated.
- **Scholarships**—The Lutheran Leadership Award is for students from Association congregations attending Gustavus; Matching Scholarships are available for any students receiving congregational funds to attend Gustavus.

Since the above is not an exhaustive list, please review the full list of resources at any time in our Association Member Handbook, which can be found online at gustavus.edu/churchrelations. To request a booking of any of these programs, contact Sara Masters in Church Relations, Center for Servant Leadership, at 507-933-7001.



Center for Servant Leadership, Church Relations

507-933-7001 | Toll-free 800-726-6194 | gustavus.edu/churchrelations

Office Hours 8 a.m.-4:45 p.m. M-F (unavailable during Chapel 10-10:30 a.m.)

BECOME A MEMBER!

Is your ELCA congregation not a member of the Association of Congregations but interested in joining? Contact the Center for Servant Leadership-Church Relations.

The Rev. Grady St. Dennis '92

Director for Church Relations and
College Chaplain
507-933-7661 | stdennis@gustavus.edu

Sara Masters

Assistant Director for Church Relations
507-933-7001 | smasters@gustavus.edu

Kari Louwagie '16

Student Intern
507-933-7073
church-relations@gustavus.edu

Fax 507-933-6337

Confirmation Retreats Program

507-933-7023
confirmation-retreats@gustavus.edu

Gustavus Youth Outreach (GYO)

507-933-7585
youthoutreach@gustavus.edu

Adult Retreat Programs

507-933-7001
retreat-center@gustavus.edu

Partners Programs

507-933-7001
church-relations@gustavus.edu

Center for Servant Leadership
Church Relations
800 West College Avenue
St. Peter, MN 56082

MAKE YOUR LIFE COUNT®
GUSTAVUS ADOLPHUS COLLEGE
 GUSTAVUS

NONPROFIT ORG.
U.S. POSTAGE
PAID
GUSTAVUS
ADOLPHUS
COLLEGE