

253rd American Chemical Society National Meeting • San Francisco, California  
**2017 WCC/Eli Lilly Travel Award Poster Session**

**Tuesday, April 4, 2017 • 11:00 am–12:00 pm**  
**Grand Ballroom A • Hilton Union Square**



**Sarah I. Allec**, *University of California, Riverside*



GPU-enabled real-time electron dynamics of nitrogen-doped graphene nanoflakes  
**COMP**

**Alexa R. Barres**, *University of Wisconsin, Madison*



Formulation and study of highly stable, semifluorinated nanoemulsions with theranostic applications  
**COLL**

**Katherine A. Benavides**, *University of Texas, Dallas*



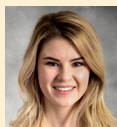
Antimony nets and transition metal sublattices: The structure and properties of  $\text{Ln}_2\text{Fe}_{4-x}\text{Co}_x\text{Sb}_5$  (Ln = La-Pr;  $x < 1.5$ )  
**INOR**

**Audrey T. Gallagher**, *Northwestern University*



Isolation of metalloporphyrin dioxygen adducts in metal-organic frameworks  
**INOR**

**Anna C. Krieger**, *Gustavus Adolphus College*



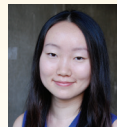
Iron and cadmium binding in metalloprotein II and myohemerythrin from *Hediste diversicolor*  
**INOR**

**Kelly M. Powderly**, *Northwestern University*



Synthesis and low-temperature properties characterization of superconducting  $\text{Ni}_{1-x}\text{Bi}$   
**INOR**

**Elaine A. Qian**, *University of California, Los Angeles*



Atomically precise Organomimetic Cluster Nanomolecules (OCNs)  
**INOR**

**Taylor M. Sodano**, *University of Michigan, Ann Arbor*



Alkaloid-like substructures via photoredox catalysis: Synthesis of 1-aminonorbornanes  
**ORGN**

**Madeline K. Wheeler**, *Dickinson College*



Comparison of synthetases in the incorporation of the non-natural amino acid p-azidophenylalanine in the oncogenic protein kRas  
**BIOL**

**Bib Yang**, *University of Massachusetts, Amherst*



Selective detection of protein homologues by outer membrane protein G nanopore  
**BIOL**



Eli Lilly and Company is acknowledged for its support of the WCC/Eli Lilly Travel Awards program

WCC Chair:  
Laura S. Sremaniak,  
*North Carolina State University*

WCC Awards & Recognition Subcommittee Co-Chairs:  
Amy Nicely, *Parkland College*  
Christine Chow, *Wayne State University*