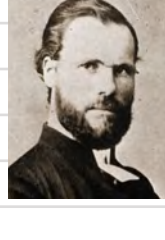


A PRESIDENTIAL TIMELINE

1862 – The school that would eventually become Gustavus Adolphus College is opened in Red Wing, Minn., by the Rev. **Eric Norelius**, who is today credited as the College's founder.



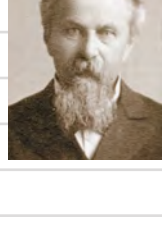
The Rev. **Eric Norelius**, founder 1862–1863

John J. Frodeen, principal 1873–1874



1873 – Amid debate about moving St. Ansgar's to Minneapolis, **John Frodeen** is handed responsibility for the entire operation of the school. A financial panic late in the year sinks plans for the "Gustavus Adolphus Literary and Theological Institute" in Minneapolis, but a delegation from St. Peter wins conference approval a year later to relocate the school in that community. Jackson returns to lead the school in its final two years in East Union.

1881 – When Nyquist resigns to pursue his idea of founding a women's seminary to remove the necessity of accepting women students at Gustavus (he would be unsuccessful), fellow teacher **Matthias Wahlstrom** becomes acting head of the College and is soon elected president by the conference. He immediately announces his intention of making Gustavus a "complete" college, introducing a freshman class in 1881–82, adding a sophomore class in 1885 and a junior class in 1888, and certifying its first college graduates in 1890.



The Rev. **Matthias Wahlstrom**, acting president, 1881–1882, president 1882–1904

1905 – Auditorium erected.

1913 – "**O.J.**" **Johnson** begins a 29-year tenure as president—the longest in the College's history—during which Gustavus becomes a thoroughly American institution.

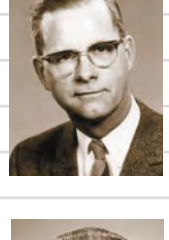
The system of majors and minors is introduced in 1914, library facilities improved, departments added, and enrollment increased. Johnson retires in 1942 at the age of 72, becoming president emeritus.



The Rev. **Oscar J. Johnson**, president 1913–1942

1927 – The Greater Gustavus Endowment Fund is established.

1944 – **Edgar Carlson**, a 1930 graduate who has been a faculty member in the Christianity Department at Gustavus since 1937, is nominated by the board for election to the presidency by the conference. He builds the faculty, the administrative structure, and the campus, highlighted by the completion of Christ Chapel in 1962. When he steps down after 24 years in office, Dean of the College **Albert Swanson** takes on responsibilities as acting president for a year while the board conducts a search for a new leader.



The Rev. Dr. **Edgar M. Carlson** '30, president 1944–1968



Dr. **Albert Swanson**, acting president 1968–1969

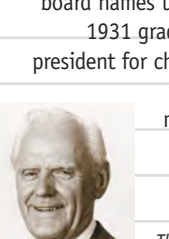
1963 – Alfred Nobel Hall of Science is built and a relationship with the Nobel Foundation established that results in the annual Nobel Conference starting in 1965.

1971 – Fine arts center built.



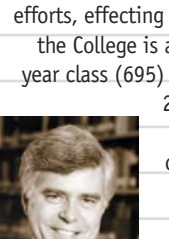
Dr. **Edward A. Lindell**, president 1975–1980

1975 – **Edward Lindell** succeeds Barth as the college's 11th president. He inherits a school with a growing enrollment, a nearly \$10 million budget, 130 faculty members, and new facilities all over the campus. But the accumulated deficit in working capital is critical, so Lindell makes it his priority to solve that problem. He announces his resignation in 1980 upon achieving his goals of righting the College's financial ship. The board names the Rev. Dr. **Abner Arthur**, a 1931 graduate who is serving as vice president for church relations and who had previously filled in for three months between Barth's and Lindell's terms, to be acting president.



The Rev. Dr. **Abner W. Arthur** '31, acting president, Summer 1975, 1980–1981

1991 – **Axel Steuer**, a university professor and administrator who at the time of his election is executive assistant to the president of Occidental College, is the College's 13th president. He works diligently to build the endowment and advance the College's national reputation, but his shining moment comes in March 1998 when tornadoes devastate the campus. He vows that Gustavus will reopen to complete the spring term and graduate its seniors on time and then drives the rebuilding efforts, effecting a recovery so complete that the College is able to recruit a record first-year class (695) that fall. After he resigns in 2002, 1960 graduate **Dennis Johnson**, vice president for college relations, is asked to serve as interim president.



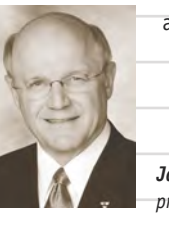
Dr. **Axel D. Steuer**, president 1991–2002



The Rev. **Dennis J. Johnson** '60, interim president 2002–2003

2008 –

The Gustavus Board of Trustees announces the appointment of **Jack R. Ohle**, a proven administrator with strong leadership skills and broad experience in higher education who had served as president of Wartburg College for the past 10 years, to be the College's 16th president. In the words of board chair Jim Gale '83, Ohle brings to his new post "a strong understanding of what makes Gustavus a special place, and innovative ideas to help move Gustavus forward as a first-class liberal arts institution."



Jack R. Ohle, president 2008–

1863 – The Minnesota Conference of the Augustana Lutheran Church moves Norelius's school to East Union (Carver), Minn., and appoints the Rev. **Andrew Jackson** its principal. In 1866, honoring the 1,000th anniversary of the death of the first missionary to Scandinavia, the school is named St. Ansgar's Academy.



The Rev. **Andrew Jackson**, principal 1863–1873, acting principal 1874–1876

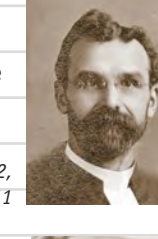
1876 – With the completion of the main building (now known as Old Main) in St. Peter, the school opens as Gustavus Adolphus College, although it would not grant a college degree until 1890. **Jonas Petter Nilson Nyquist** arrives from the woods of Michigan to be president.



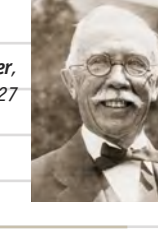
The Rev. **Jonas P. Nyquist**, president 1876–1881

1890 – First baccalaureate degrees awarded.

1904 – Moving the College to Minneapolis comes up again in 1902, eventually leading Wahlstrom to announce his resignation. The conference elects 1892 graduate **Peter Mattson**, who is more of a scholar than his predecessors and finds time during his first two years as president to complete the studies that earn him his Ph.D. A new auditorium is built early in his tenure, effectively ending the calls to move the College. Ill health and an acrimonious debate over intercollegiate athletics lead Mattson to resign in 1911, and it falls to Vice President **J.P. Uhler** to serve as acting president for two years.



The Rev. Dr. **Peter A. Mattson** '92, president 1904–1911



The Rev. **Jacob P. Uhler**, acting president 1911–1913, 1927

1922 – New gymnasium built. It is later named the O.J. Johnson Student Union in honor of the longtime president.

1934–1935 – Enrollment drops to a low of 363.

1942 – "O.J.'s" successor is 1922 Gustavus graduate **Walter Lunden** (formerly Ludeven), a University of Pittsburgh sociology professor. He proposes several programs to respond to the war effort but soon clashes with students and board members over continued athletics participation. Eighteen months later, after he asks for a leave of absence to take on a military assignment, the board accepts his resignation. From December 1943 until September 1944, philosophy professor and vice president **Oscar Winfield** leads the College.



The Rev. Dr. **Walter Lunden** '22, president 1942–1943



The Rev. Dr. **O.A. Winfield**, acting president 1943–1944

1962 – Christ Chapel completed.

Frank Barth, president 1969–1975



1969 – **Frank Barth**, a former financial executive with the Chicago-based Pettibone Corporation, is the first non-clergy member to hold the presidency of the College. His administration is marked by several building projects and one great loss: During the early morning hours of January 8, 1970, the Auditorium is completely gutted by a fire. Among the new facilities, the Harold and Ruth Schaefer Fine Arts Center is completed in 1971, the second Folke Bernadotte Memorial Library opens in 1972, and an arboretum is begun in 1973 with the planting of the first tree seedlings by volunteers.

1981 – In March 1981 the board announces the election of 1949 graduate and psychology professor **John Kendall** (son of former Minnesota Conference president Leonard Kendall) as the college's 12th president. Recognition and advancement come on several fronts during Kendall's administration. In 1983 the College is awarded membership in Phi Beta Kappa. A new, state-of-the-art physical education complex, Lund Center, opens in 1984. In 1985 the College unveils a new curriculum that includes a "Writing Across the Curriculum" component.



The Rev. Dr. **John S. Kendall** '49, president 1981–1991

1998 – Tornado severely damages campus.

2003 – **James L. Peterson**, a 1964 graduate who has been CEO of the Science Museum of Minnesota, is named the 15th president of Gustavus. On his watch, the College's endowment passes the \$100 million mark. A strategic directions process is instituted and the College's core values intentionally articulated. He announces his intention to retire following the 2007–08 year.



Dr. **James L. Peterson** '64, president 2003–2008